

EaseUS[®] EverySync

User Guide



EaseUS EverySync

EaseUS EverySync.....	2
Welcome.....	3
Get Started.....	3
Hardware Requirements.....	3
System Requirements.....	3
Supported File Systems.....	4
Supported Hard Disks.....	4
Activation.....	4
Home Page.....	5
My computer/Network shares.....	6
New Cloud Connection.....	10
New FTP Connection.....	13
Disconnect the Sync.....	15
System Tray Menu.....	16
Support.....	17
Troubleshooting.....	17

Welcome

Thank you for using EaseUS EverySync, an all-in-one and easy-to-use programs to synchronize your data with your local computer, FTP and a reliable tool to manage your multiply cloud accounts. It is endowed with a visualized interface and straightforward user experience to ensure an easy and smooth use for common users.

This User Manual includes a detailed instruction of how to use the program and all the features in this product.

Get Started

Some basic references about using this product and how to activate trial after purchase are included in this section. User probably get a main idea if this product is suitable for my case after reading it.

Hardware Requirements

500 MHz processor or faster

At least 1 gigabytes (GB) RAM, At least 2 GB RAM under Window 8/8.1/10

At least 1 GB of available space on the hard disk

Keyboard and a Microsoft Mouse or some other compatible pointing device

System Requirements

Your computer must be running one of the following operating systems:

Windows XP®

Windows Vista®

Windows® 7

Windows® 8

Windows® 10

Windows Server® 2003

Windows Server® 2008

Windows Server® 2008 R2

Windows Server® 2012

Windows Server® 2012 R2

Windows Small Business Server 2003

Windows Small Business Server 2008

Windows Small Business Server 2011

Supported File Systems

EaseUS EverySync supports the following file systems: FAT12, FAT16, FAT32 and NTFS.

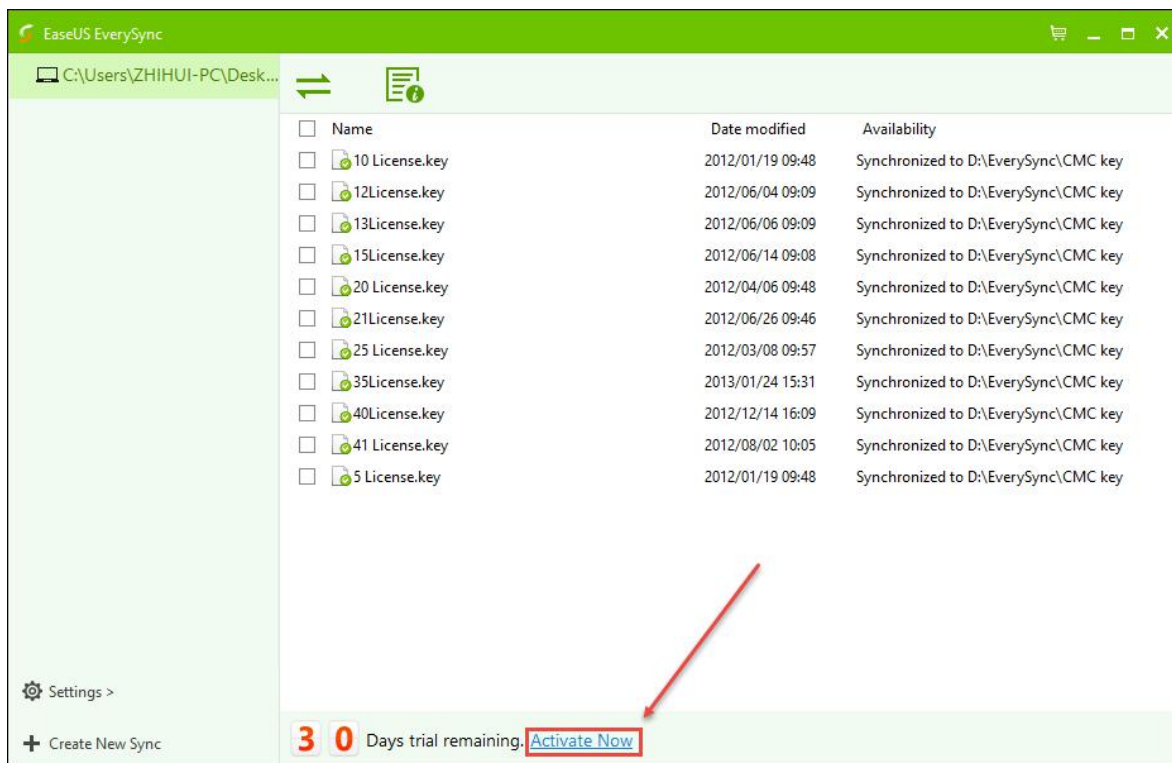
Supported Hard Disks

IDE, EIDE, SATA, ESATA, ATA, SCSI, iSCSI, USB 1.1/2.0/3.0 disk are all supported by EaseUS EverySync.

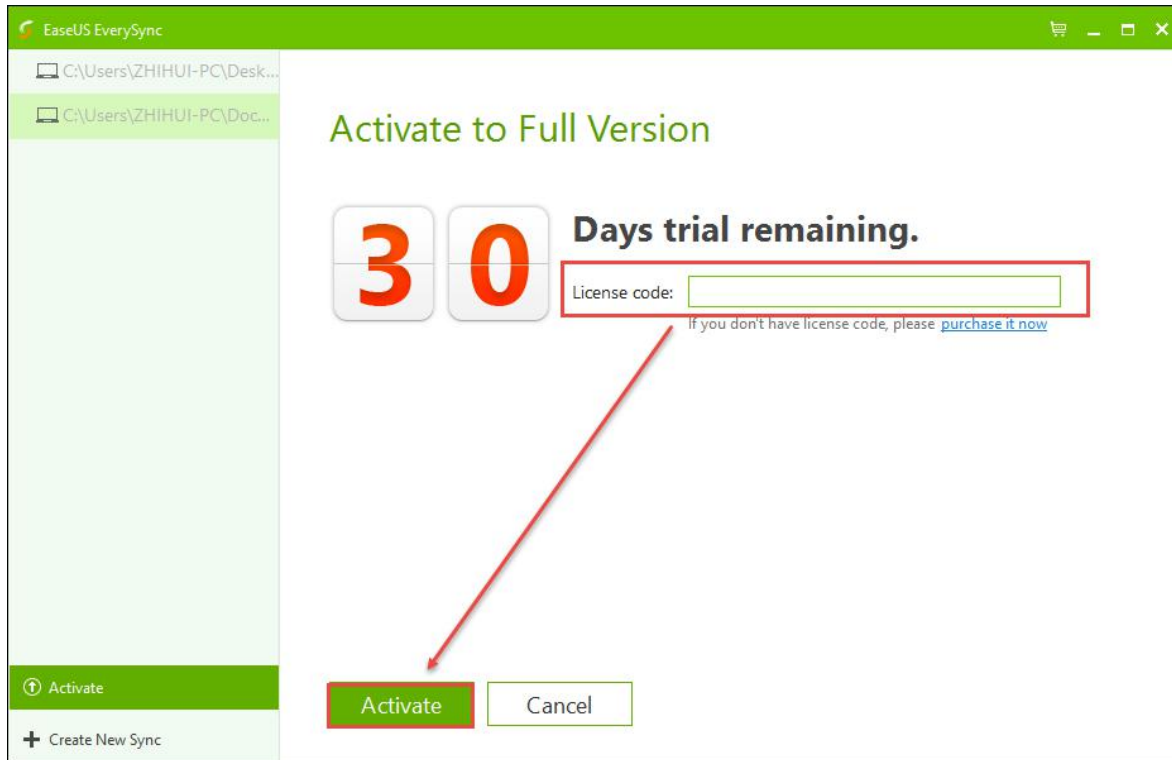
Dynamic disk, MBR and GPT disks are also in the supported list of EaseUS EverySync.

Activation

The Trial version offers you 30 days to test this program. After creating a new sync task, you notice how many days are left in the validity of your Trial version.



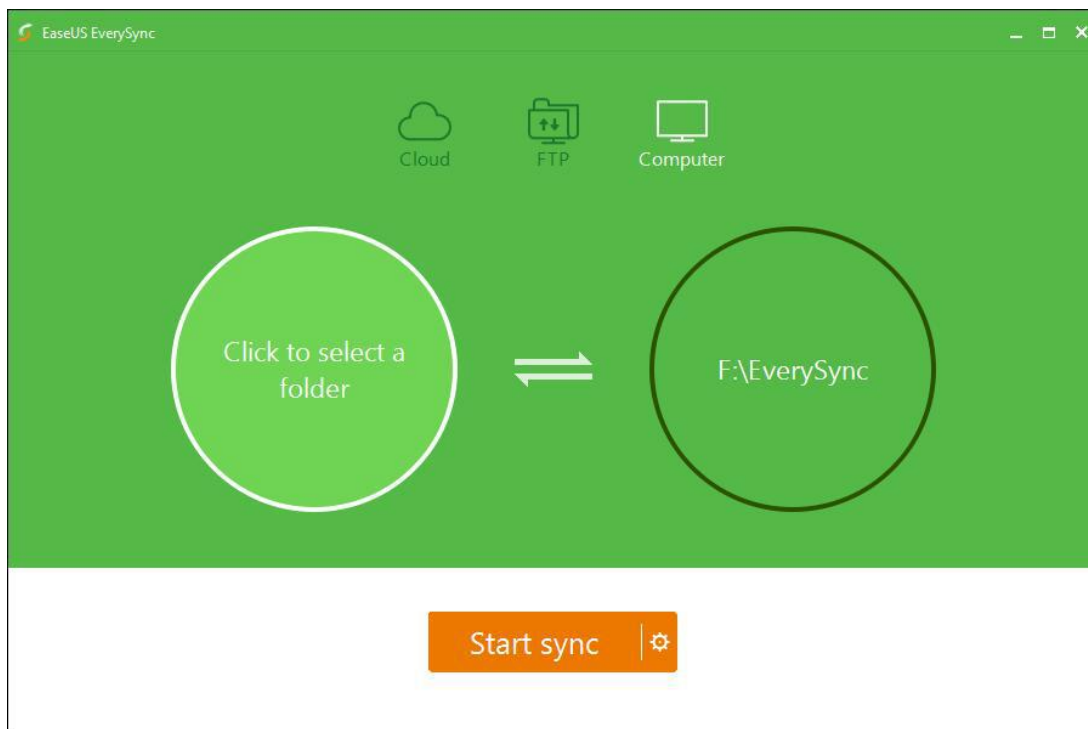
Click **Activate Now** if you are ready to activate this program to the paid version.



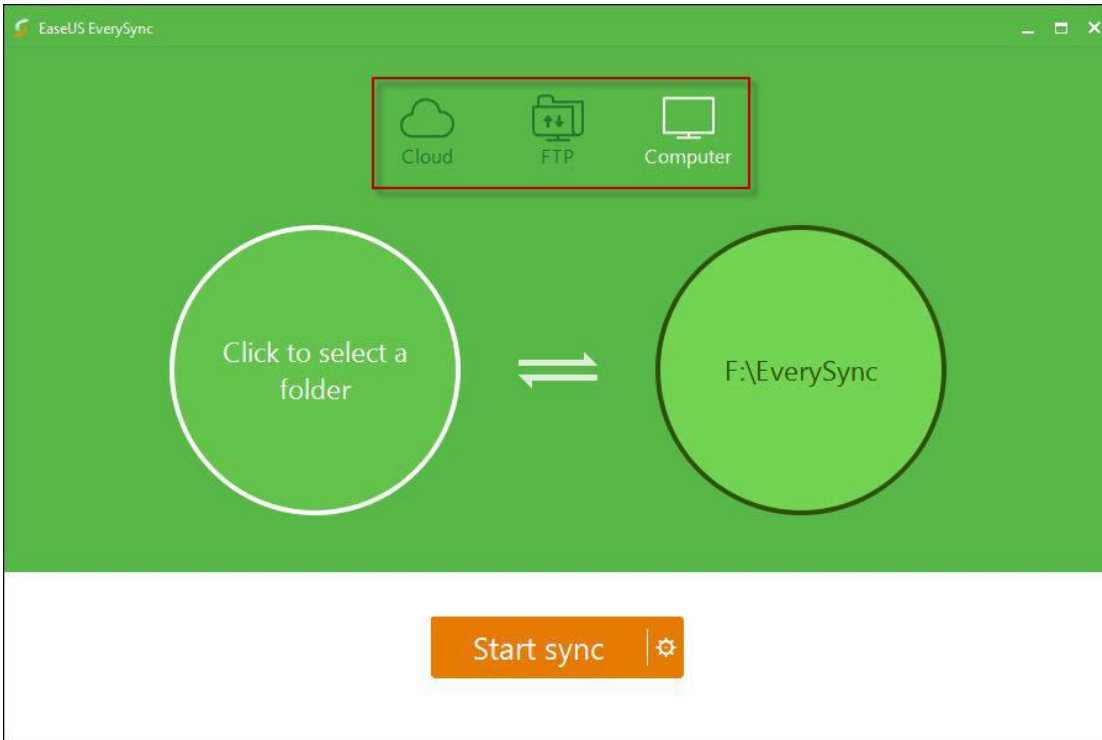
Fill in the license code you purchase and click *Activate* to register it to the full version. Please click *Purchase it now* if you currently do not have a license code.

Home Page

When first launching this program, first to be noticed is a visualized interface with 2 clickable circles and other options.

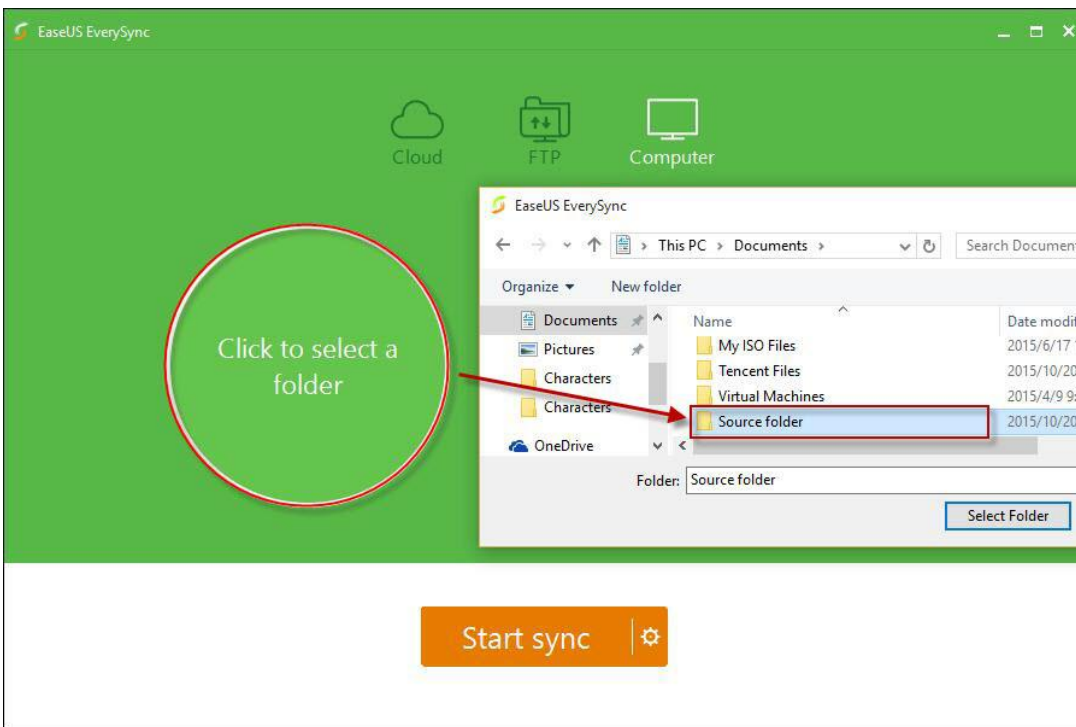


First to select to sync data between My computer/Network shares, My computer/Cloud or My computer/FTP

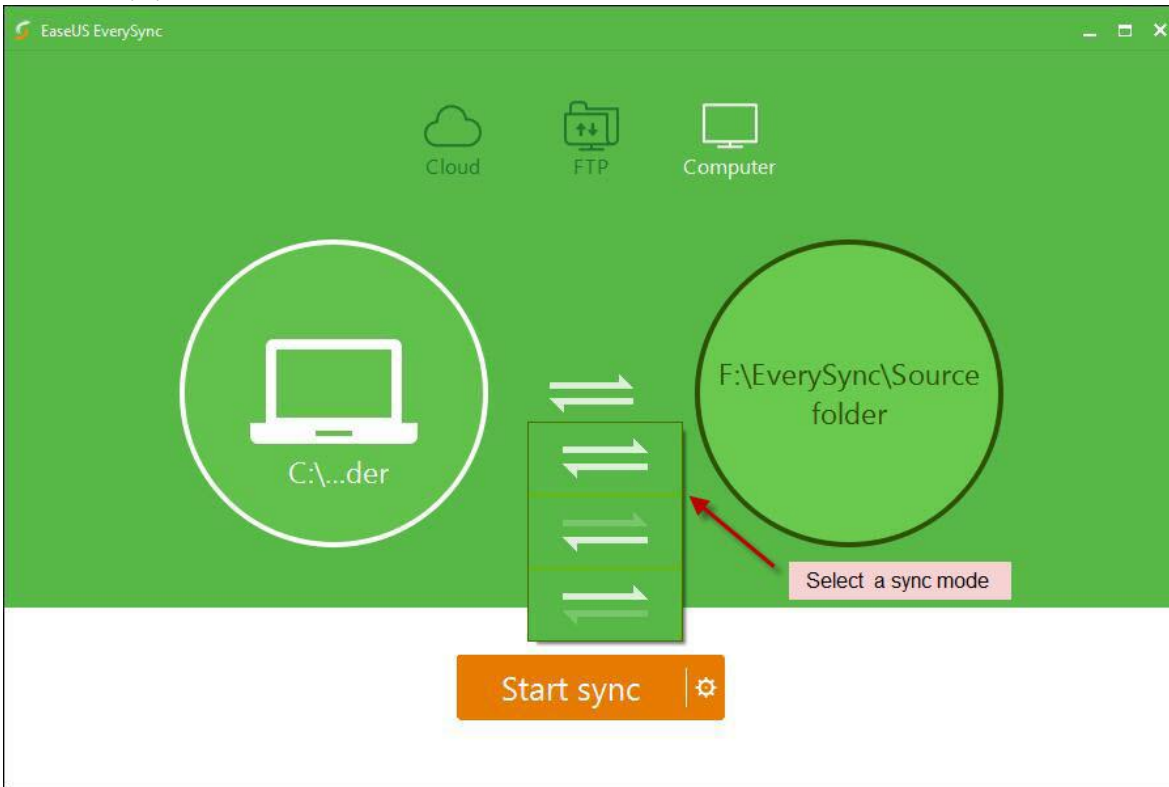


My computer/Network shares

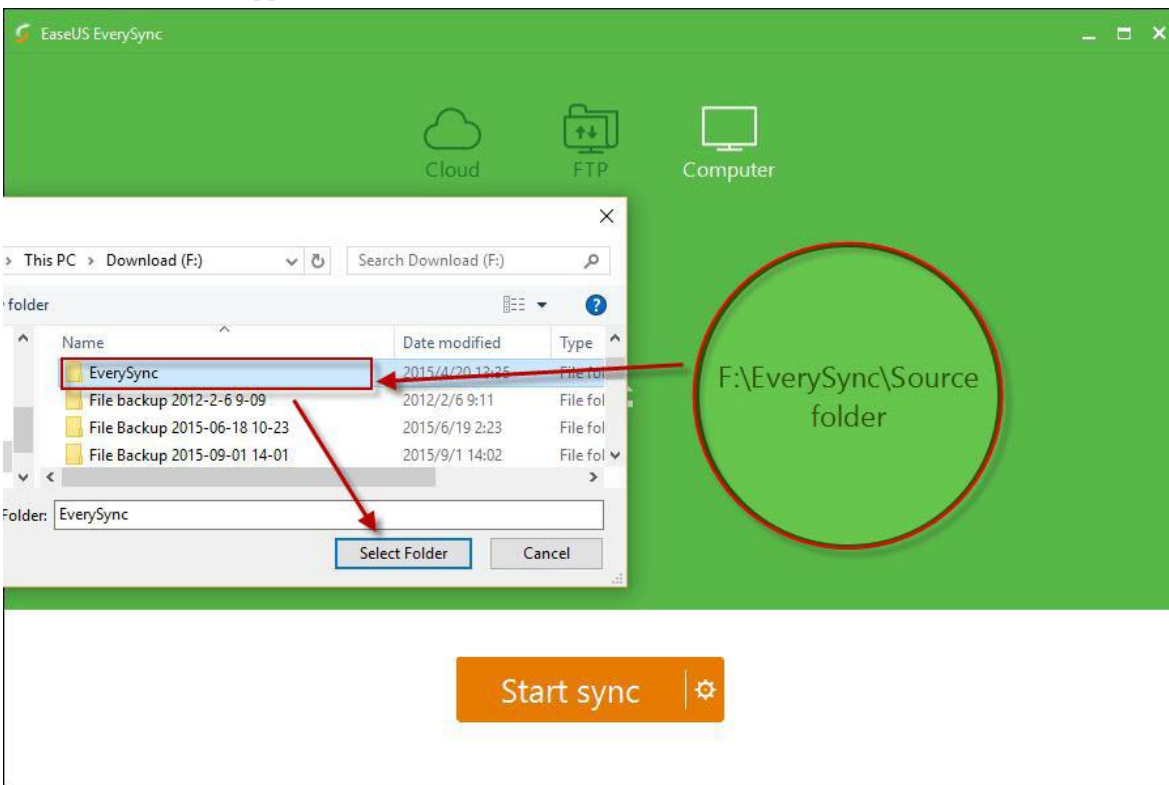
Choose *Click to select a folder* option. In the prompted window select the original folder which contains the contents you want to sync.



Choose the Bidirectional Mode or Unidirectional Mode to keep your files synchronous.



Click the circle at the left to select the location of the target folder, which can be a local or external drive. NAS and other network drives also supported.

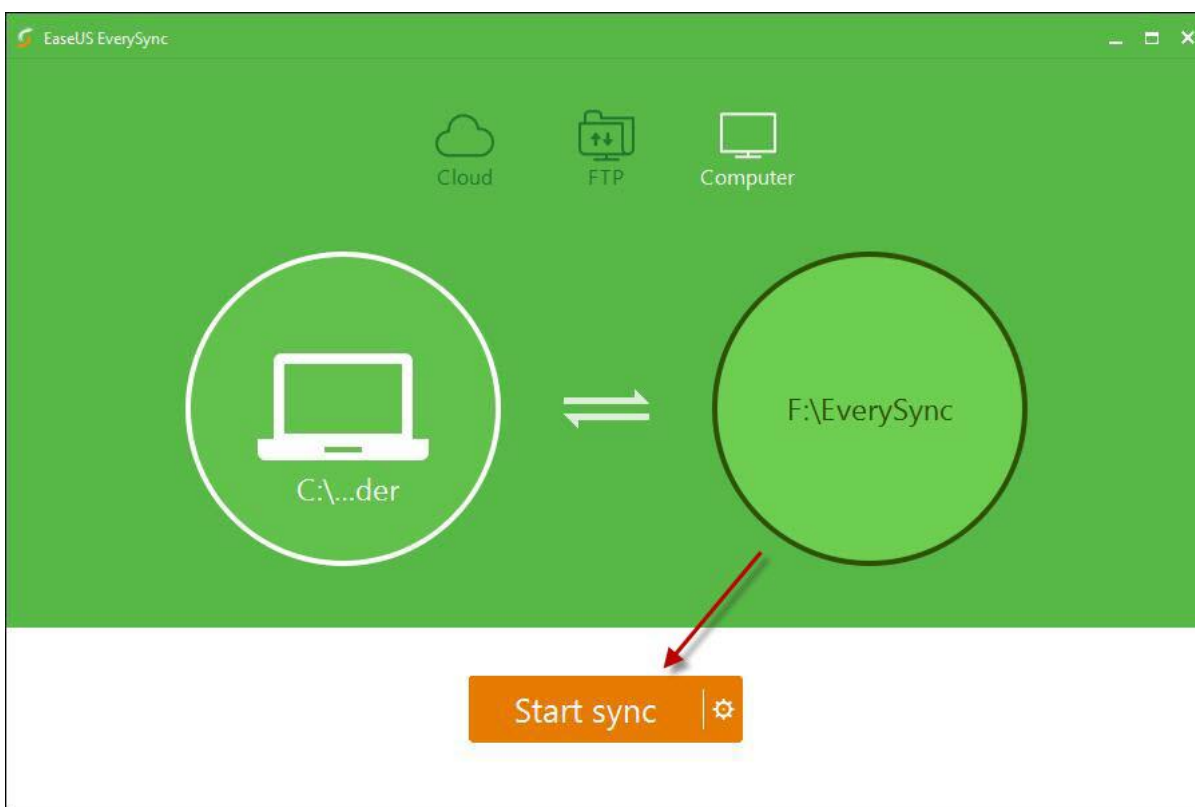


The default target folder will be named as EverySync. After you select the folder you want to sync, a new subfolder with the same name as your original folder will be automatically generated under the target folder.

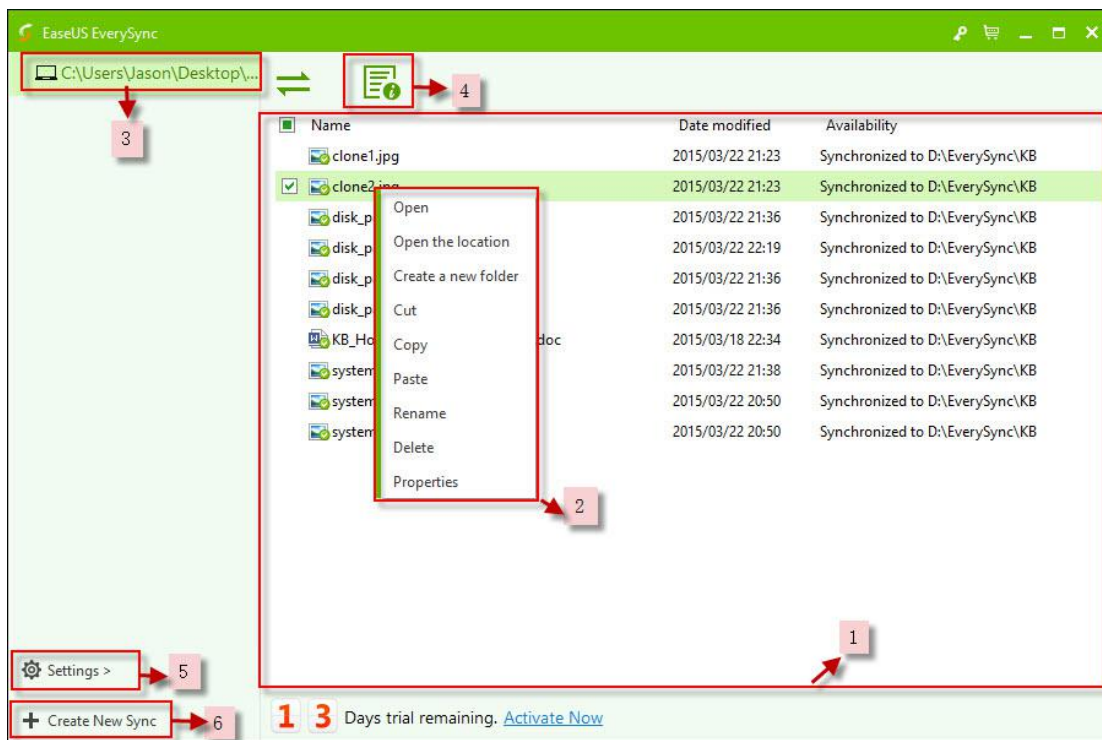


Note: if you change the location of the target folder, this subfolder will not be automatically generated. All the files under your original folder will be directly saved under the target folder.

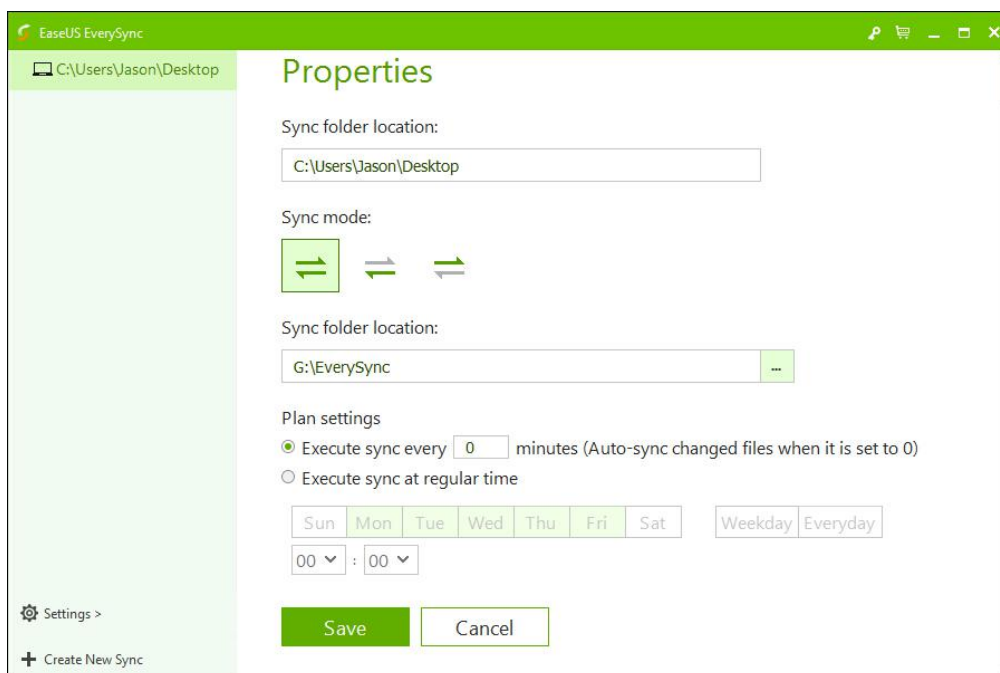
Click **Start sync** when you are ready.



A new window will prompted up with the details of your target folder.



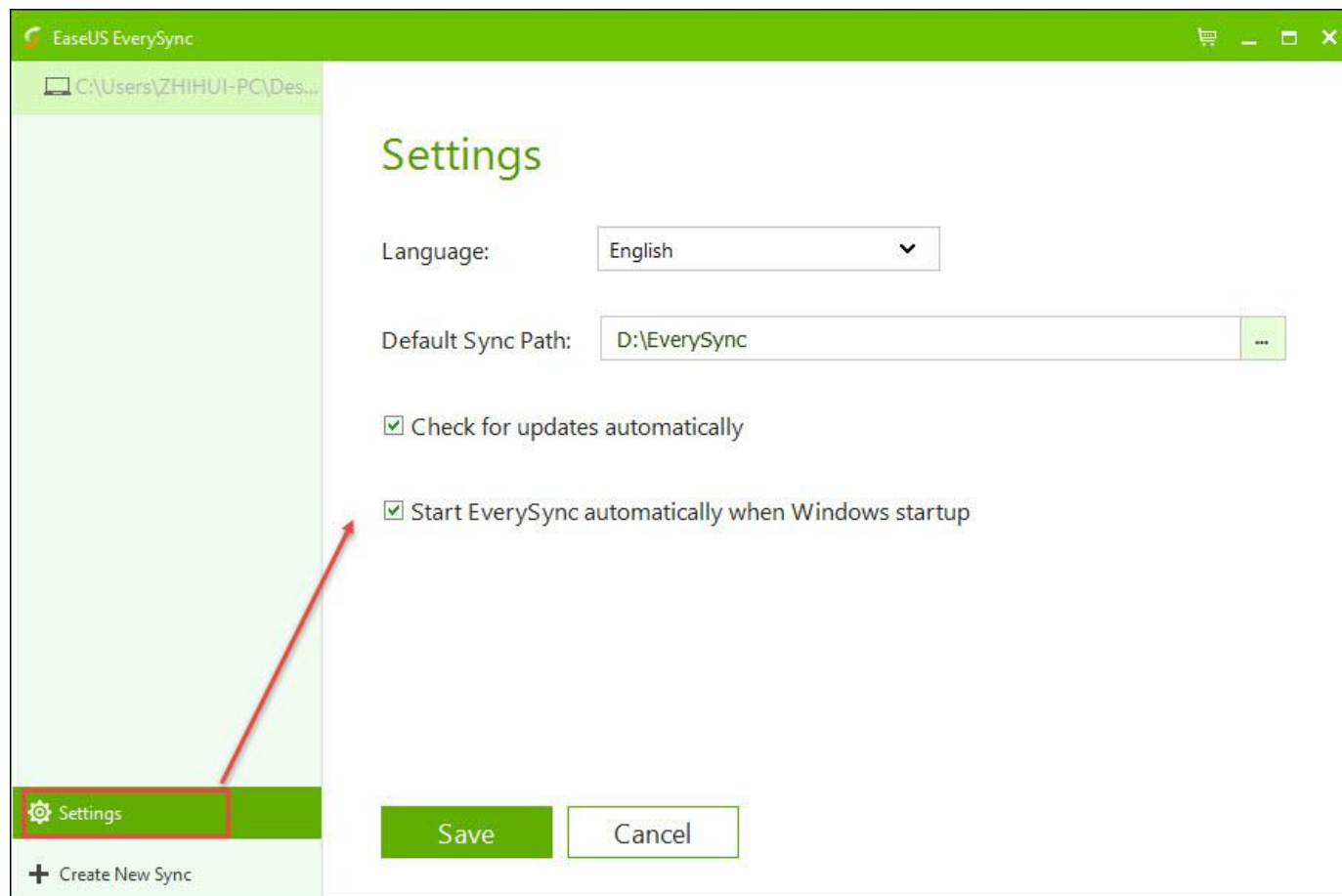
1. A list of all the synced files with their original names, last modify time and availability.
2. Right clicking on one or multi files you will get **Open**, **Open the location**, **Cut**, **Copy**, **Paste**, **Rename**, **Delete** and **Properties** options.
3. Here shows the location and name of the original folder.
4. Properties Settings where you can view and modify the location of original and target folder, sync mode and plan settings. See screen shot below.



Plan settings have two options: Execute sync every X minutes and Execute sync at regular time. If you need to sync

real-time, we strongly suggest you choose Execute sync every 0 minutes.

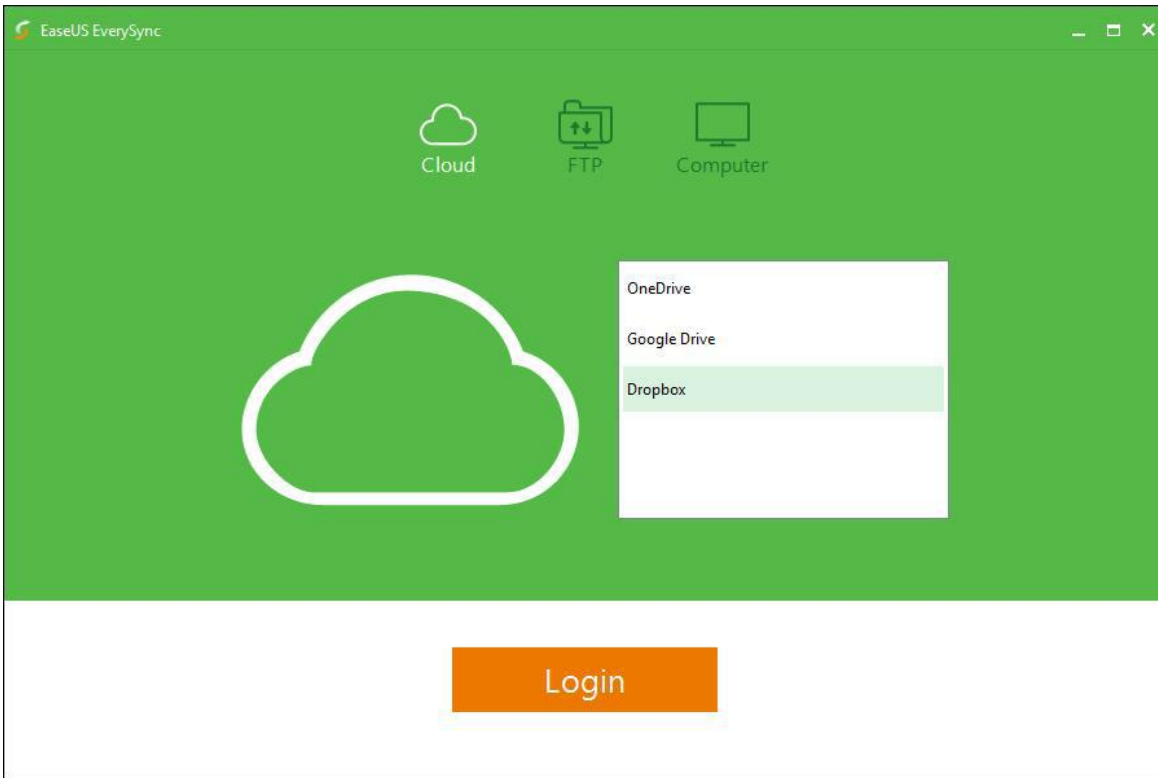
5. Settings offers you the option to go to the **Activate**, **Help**, **About** and **Settings** Page. In the setting page, to modify the Language, default sync path, enable Check the Upgrade Automatically, Start EverySync automatically when Windows startup.



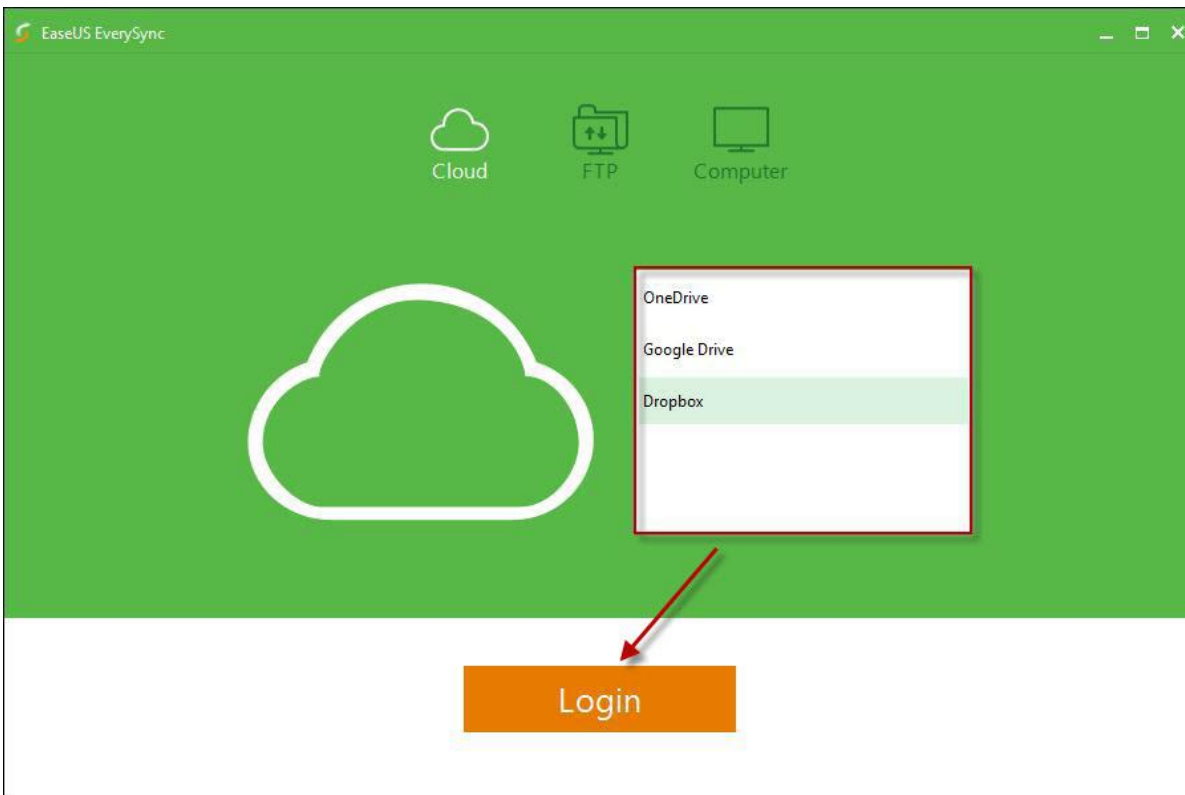
6. Create a New Sync task. If you keep the default sync path, every sync task will generate a new subfolder to save the synced files.

New Cloud Connection

EaseUS EverySync can centralized manage your multiply cloud accounts under the New Cloud Connection. **OneDrive**, **Google Drive** and **Dropbox** are supported.

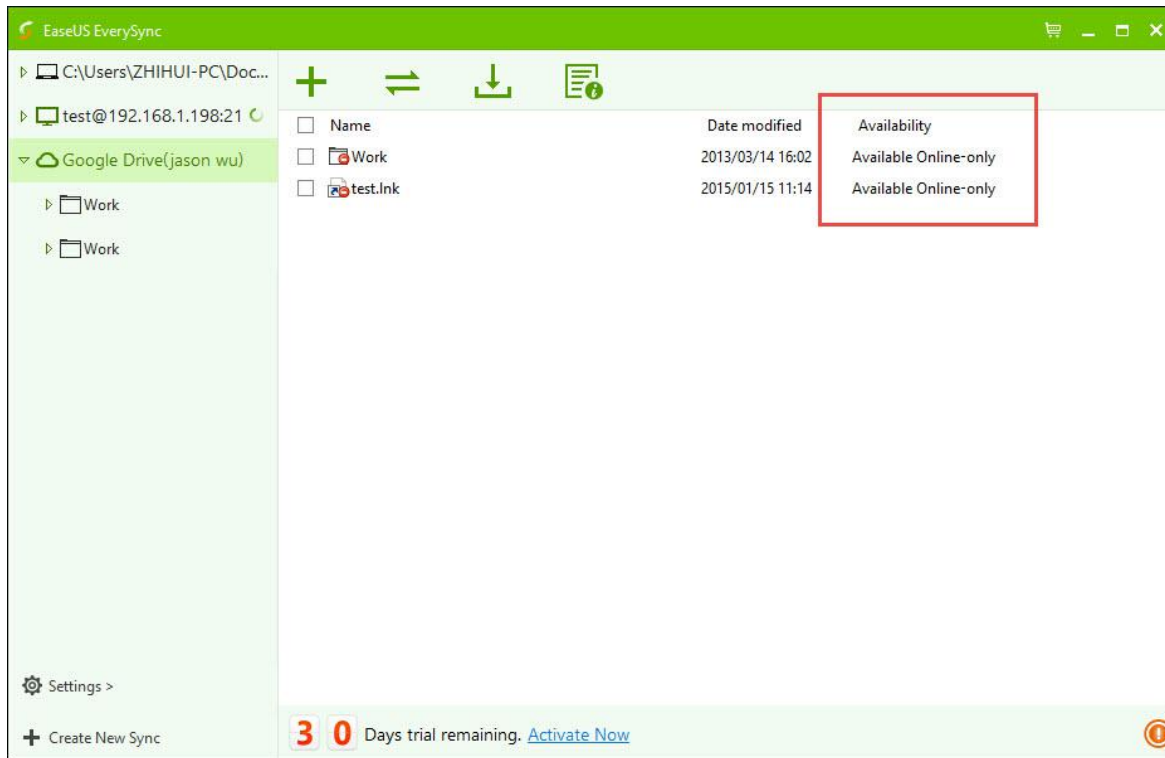


Select the Cloud you want to sign in, click **Login**. A new web browser will direct you to the login page of your Cloud website.

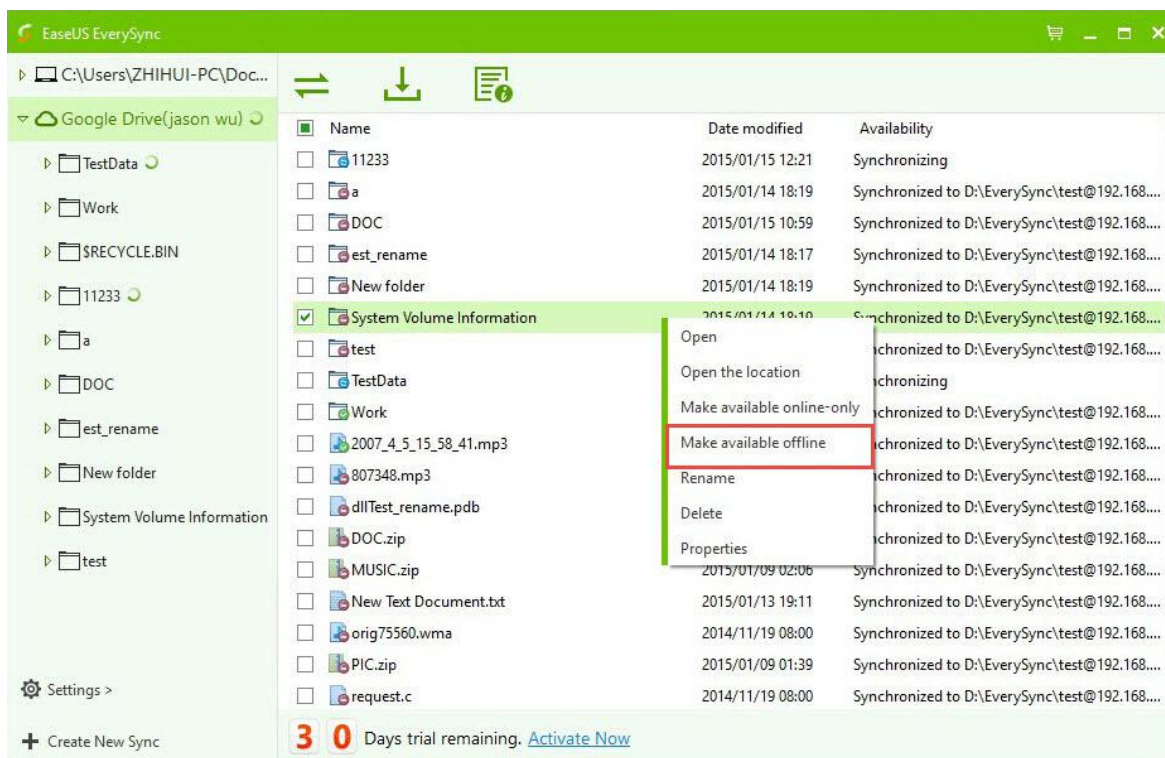


Click Accept to allow EaseUS EverySync to achieve the privilege to manage your Cloud account.

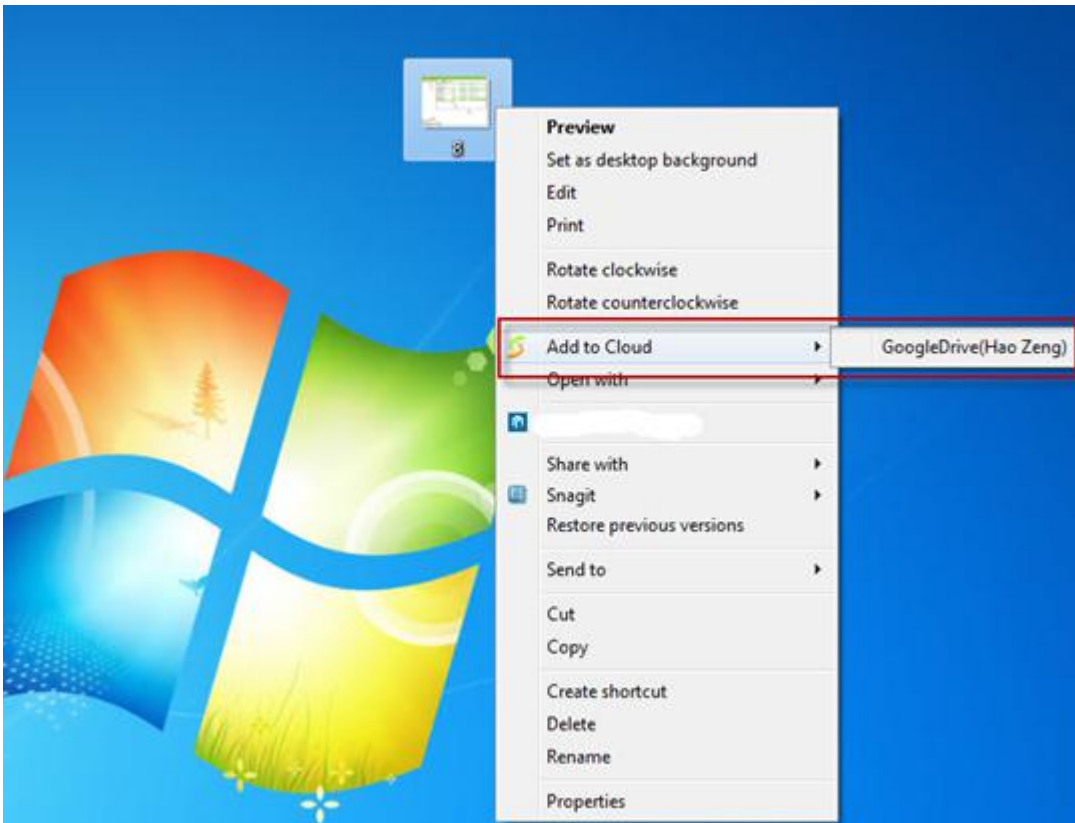
After confirming the sync, all the files in your Cloud are marked as *Available Online-only* in the list. Currently they are not downloaded into the target folder of the local drive.



Select the files you want to download, right click and choose **Make available offline** under the Availability you will check the status of these files, synchronizing or successfully synchronized.



Right clicking every single file on your computer, an **Add to Cloud** option will be available and allow you to sync it to your Cloud.



By doing this with many other sync program, this file will be first automatically moved to their local Cloud folder before uploading to Cloud. This will not be operated in EaseUS EverySync, your file will stay in the default path and no copy will be generated in the target folder.

Note:

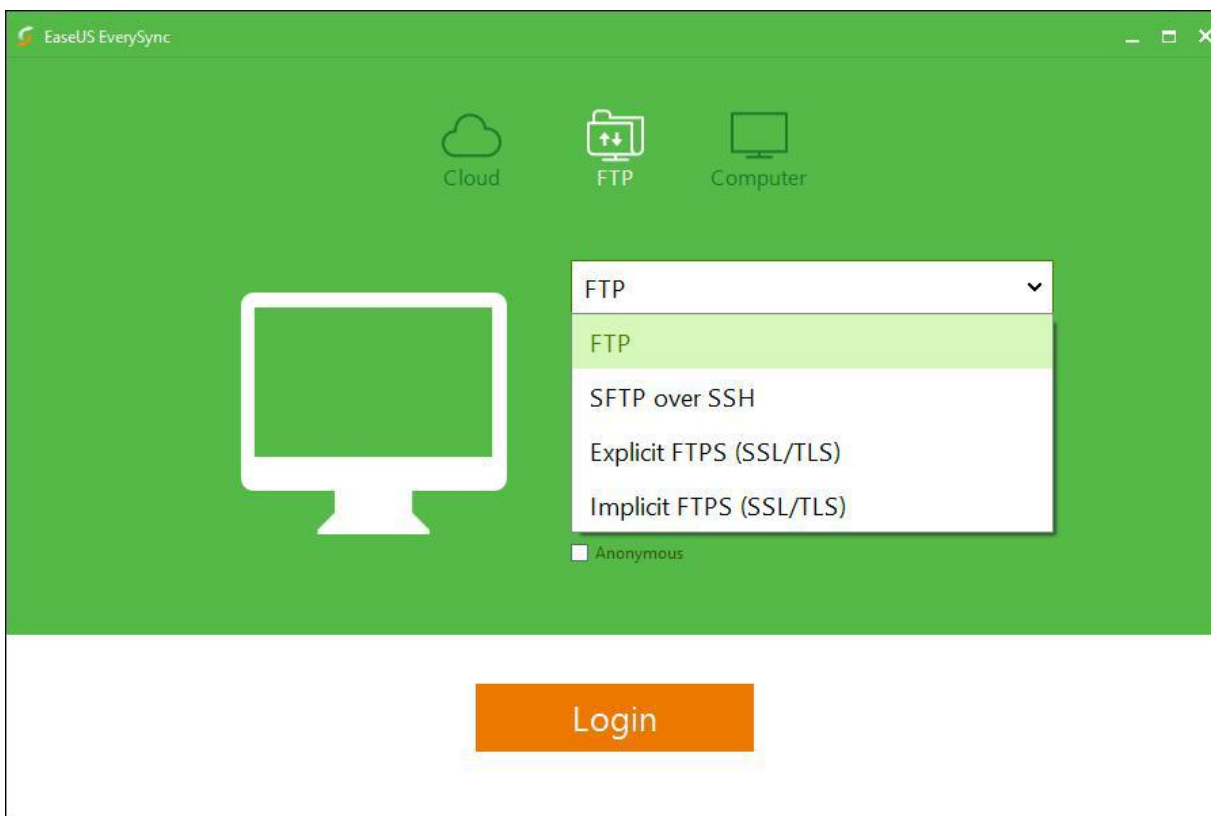
Only the free cloud is supported now. The business/paid version of **OneDrive**, **DropBox** and **GoogleDrive** are not supported.

New FTP Connection

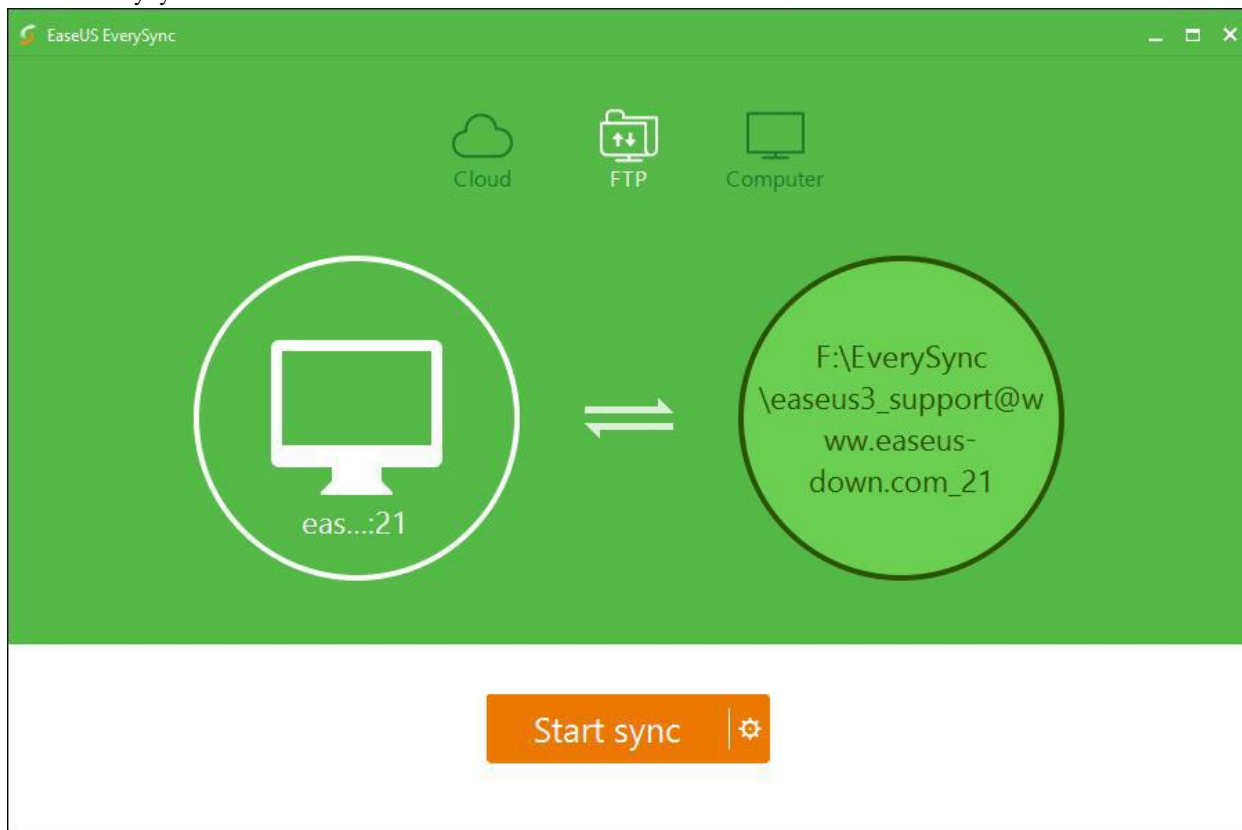
Switch to New FTP Connection, fill in the inquired information to login into your FTP server.



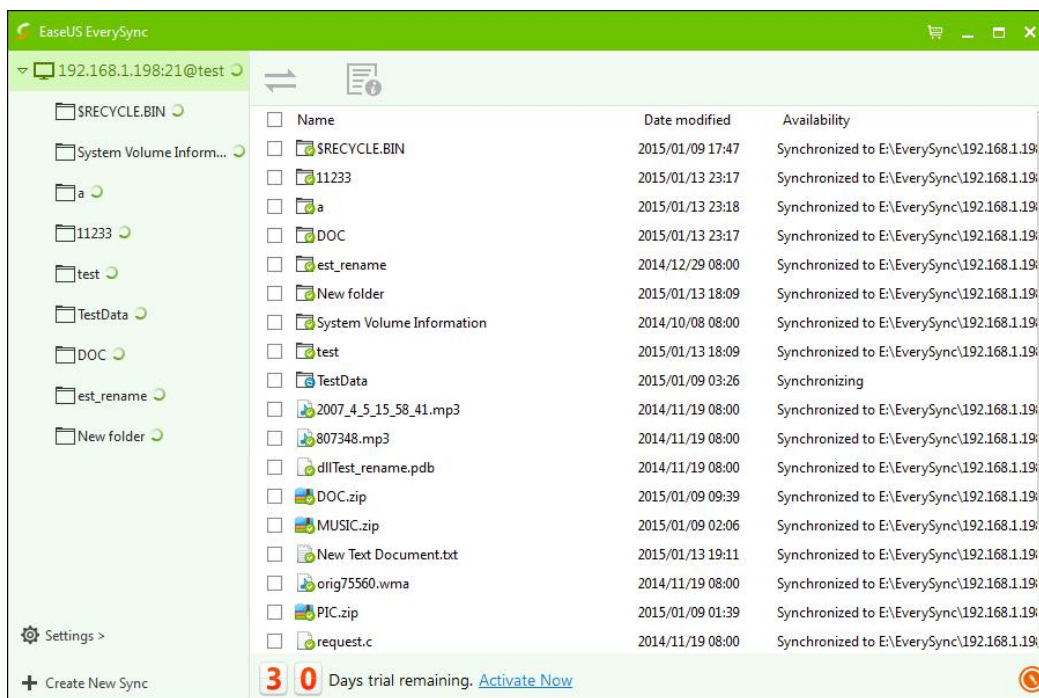
You are also allowed to switch to SFTP over SSH, Explicit FTPS (SSL/TLS) and Implicit FTPS (SSL/TLS)



When the connection to your FTP is made, please click **Start sync** to manage your synced files.



The following operation and interface will be the same as the Cloud and local connections.

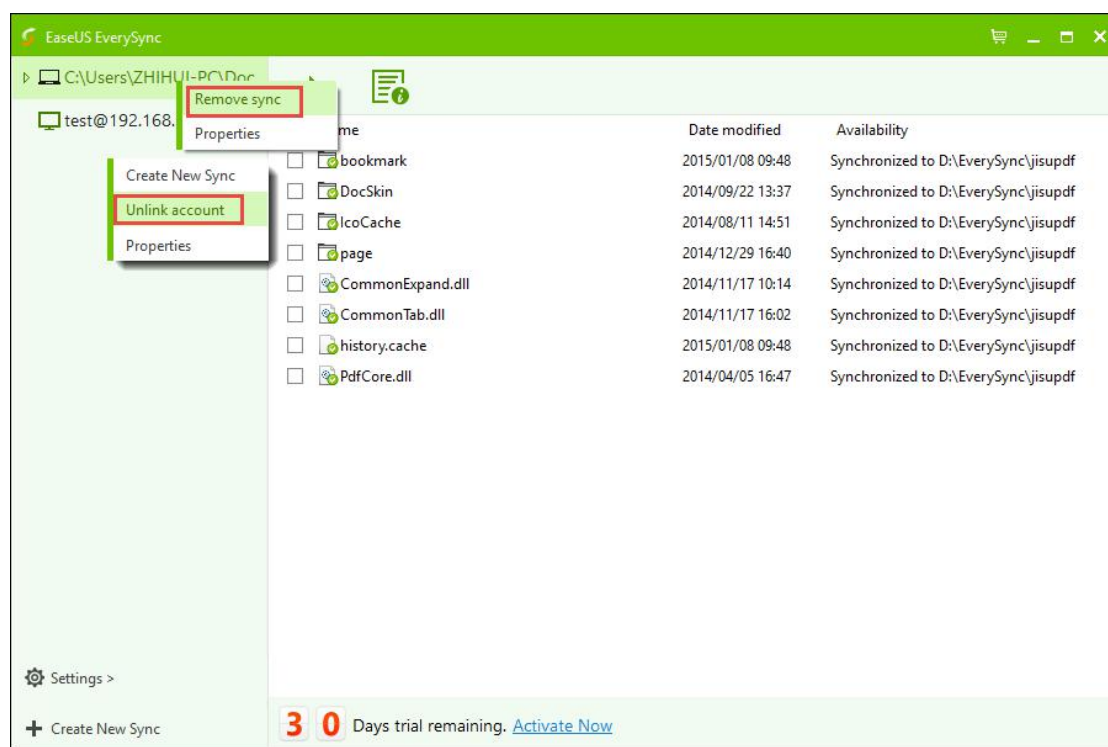


Note: Unlike a Cloud connection, the files in the FTP server will be automatically synced into your target folder.

Disconnect the Sync

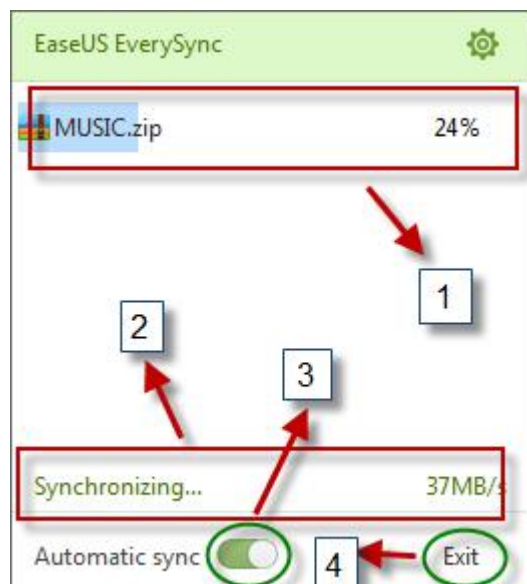
Right click on the folder you want to disconnect the synchronization and select **Remove sync** (under My Computer/Network Shares) or **Unlink account** (Under Cloud or FTP connection). EaseUS EverySync will stop syncing files between these 2

folders and remove this folder from the list.



System Tray Menu

Find the tray icon in the Windows Taskbar, left click on it to enable the EaseUS EverySync System Tray Menu.



1. The processing bar of the synchronizing file.
2. Here check the speed of the synchronization.
3. Enable/Disable the Automatic Sync

4. Exit the program

Support

If you cannot find what you are looking for in this manual, please feel free to contact us by sending your email to support@todo-backup.com.

If there is any error on using EverySync, please take **screenshot** about the error and run **errReport.exe** in '**bin**' folder under the installation directory of EverySync to get an error report, and describe the issue clearly then send them to our support email. We would provide the right solution immediately for you.

Troubleshooting

FAQ

Q1: How to create a new sync task if you already have one?

A: You can click the 'Create New Sync' in the lower-left corner to create a new one.

Q2: In which side should the files in the list showing in the right side of the program locate?

A: They are the files that have been synced between both sides. (Similar to the file display mode of a Cloud program)

Q3: How to synchronize files manually?

A: Sorry, the current version of EverySync can only do the file synchronization automatically.

Q4: How to set the time interval of the auto-sync?

A: You could set under the “Properties” of the sync task.

Q5: Why I can find some redundant files like abc(1).txt generated in EverySync after processing a synchronization?

A: To avoid a file conflict, EverySync will rename a file if it detects there are files with same name under one directory.

Q6. Why I cannot switch the sync mode under the subdirectories of a 'My computer' sync task?

A: Only switching the sync mode under root directory is supported in the current version.

Q7: Why the sync task is lost after switching the user?

A: The sync task for each user is independent.