

EaseUS[®] LockMyFile User Guide

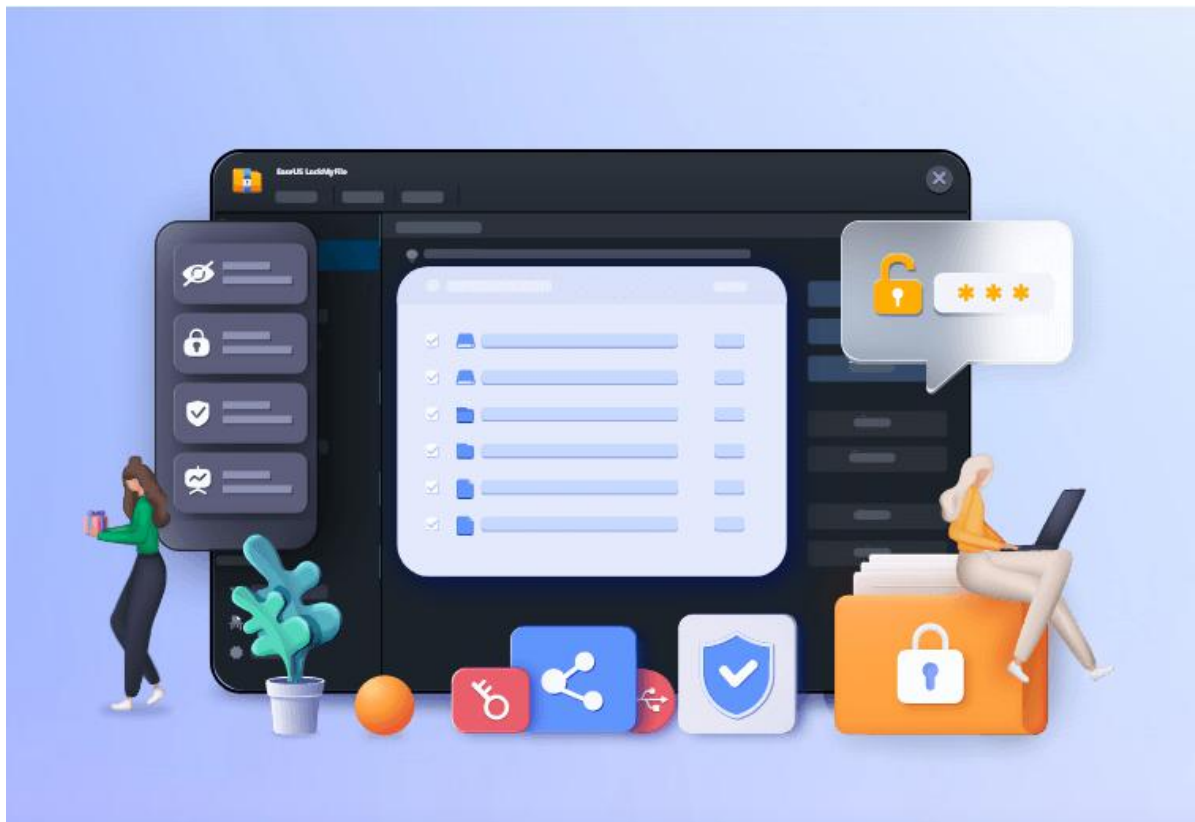


Table of contents

Welcome.....	- 1 -
Installation and Activation.....	- 1 -
Hiding File.....	- 3 -
Locking File.....	- 7 -
Protecting File.....	- 12 -
Folder Monitor.....	- 12 -
File Encryption.....	- 13 -
File Shredder.....	- 14 -
Settings.....	- 16 -
Feedback and Support.....	- 18 -

Welcome

Thanks for using EaseUS LockMyFile.

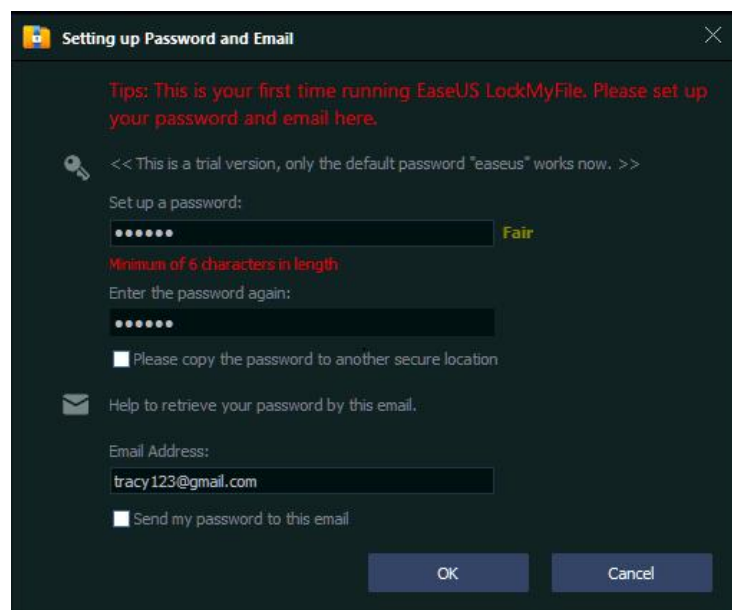
No matter you are a businessman, an employee, or a student, a computer can assist you in your routine work. You save your personal information, documents, and other similar sensitive stuff on your computer. However, it might hurt you if they get leaked. With this software, you will never worry about data theft by malicious behavior and privacy leaks.

EaseUS LockMyFile is a powerful file protection software with comprehensive folder security functions. It supports hiding files/folders/partitions, write protection, encryption, file deletion, folder operation record monitoring, etc. It is suitable for the internal disk and external disk, flash drive, thumb drive, memory card, pen drive, and even network drive.

Installation and Activation

Setting up Your Password

For the first time running the software, you will be asked to set up your password and email account.



Setting up Password and Email

Tips: This is your first time running EaseUS LockMyFile. Please set up your password and email here.

<< This is a trial version, only the default password "easeus" works now. >>

Set up a password:

••••• **Fair**

Minimum of 6 characters in length

Enter the password again:

•••••

Please copy the password to another secure location.

Help to retrieve your password by this email.

Email Address:

tracy123@gmail.com

Send my password to this email.

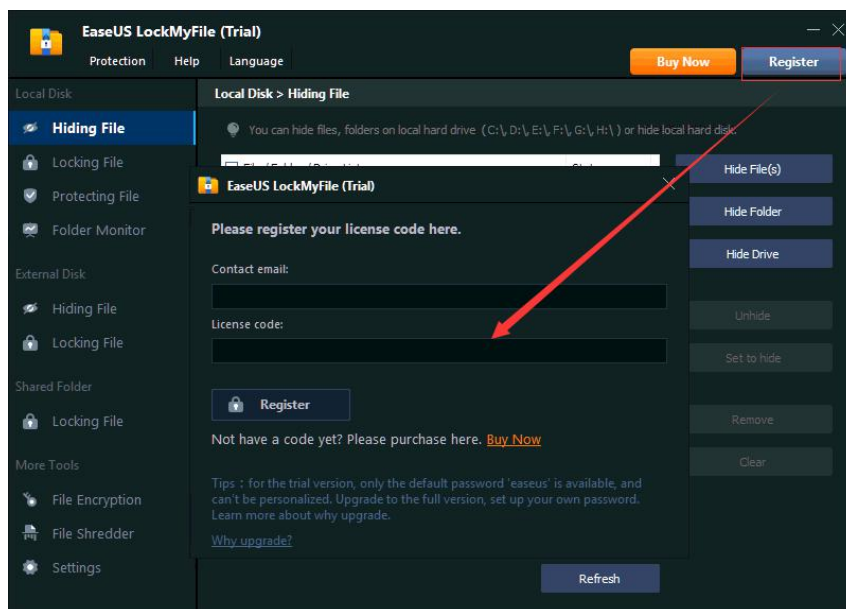
OK Cancel

The default password in the Trial version is easeus, and it cannot be modified before you register the product to the Paid version. You can receive and retrieve the password with the Email Address on this page in case you can not remember it.

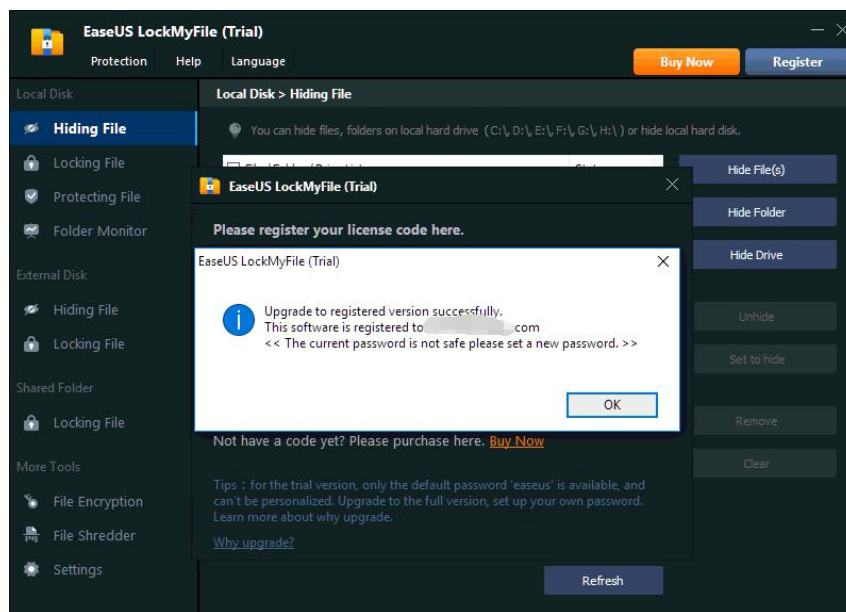
Note: Please make sure to remember your password or keep it in a safe place for your future reference.

Activation

To obtain the full feature of EaseUS LockMyFile, please click Buy Now to purchase a license code. If you already have a license code, please click Register in the right corner of the product, and input the contact email address and license code accordingly.



A notification window will pop up when the activation completes.



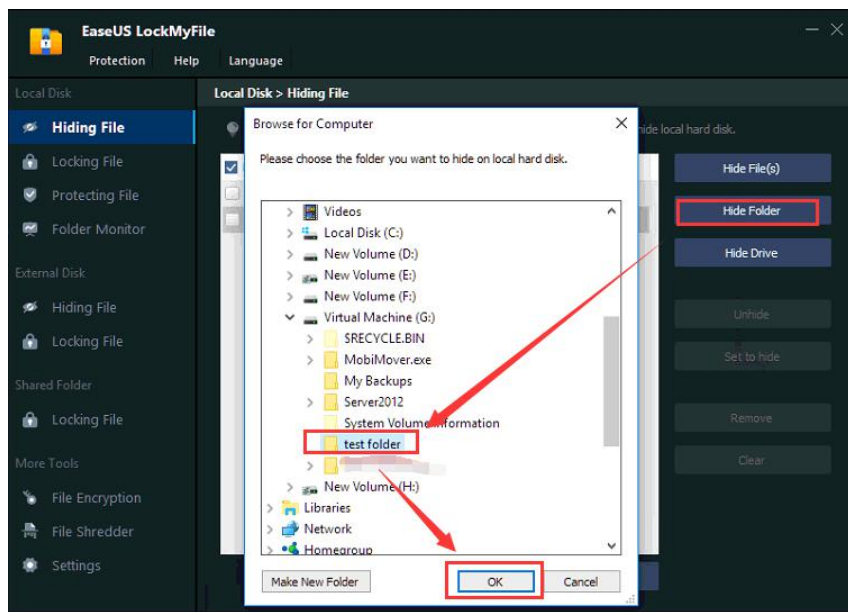
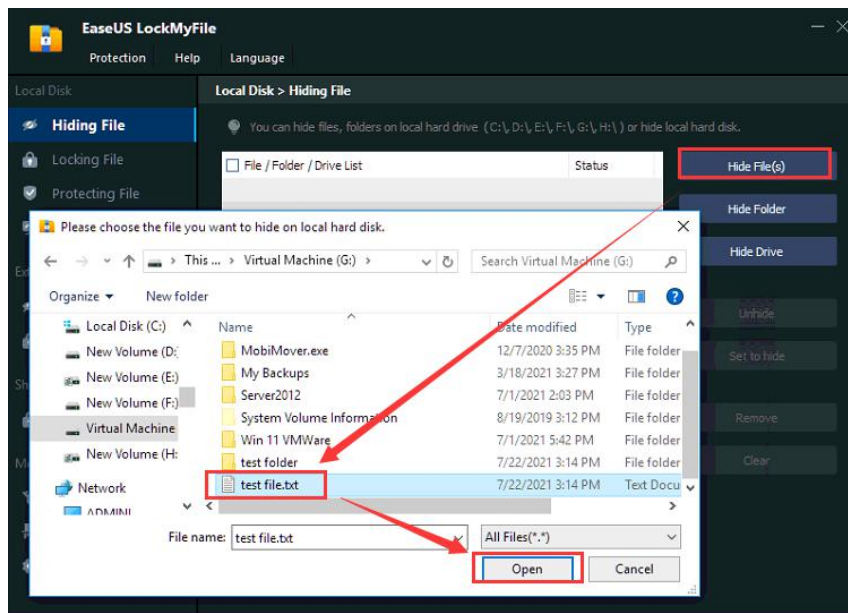
Hiding File

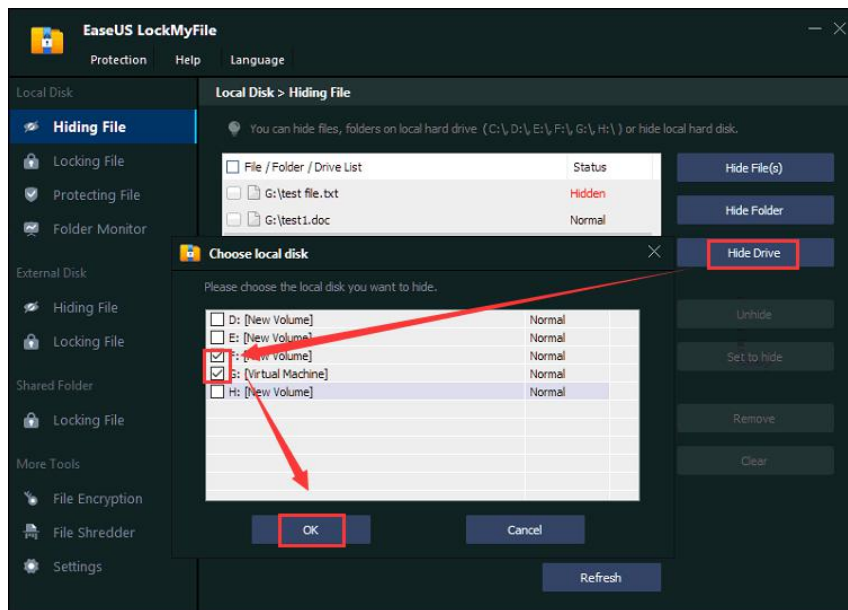
This feature is able to make your local private files/folders and local drives completely invisible to anyone or any programs. It is available for **Local Disks** and **External Disks**.

Local Disk

Click on **Hide File(s)**, **Hide Folder**, **Hide Drive** button to select the file/folder/drive you want to hide. Then they will be added to the hiding list. You can add files as many as you want.

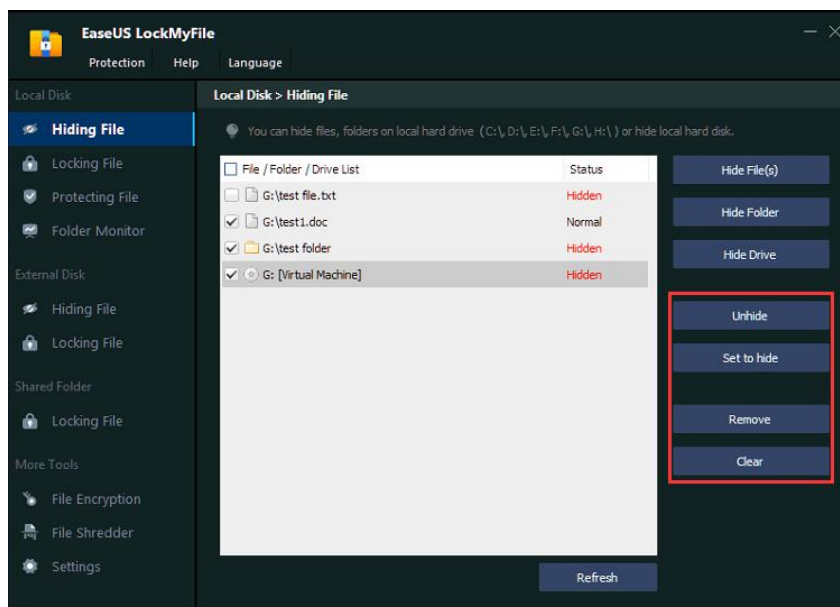
EaseUS LockMyFile User Guide





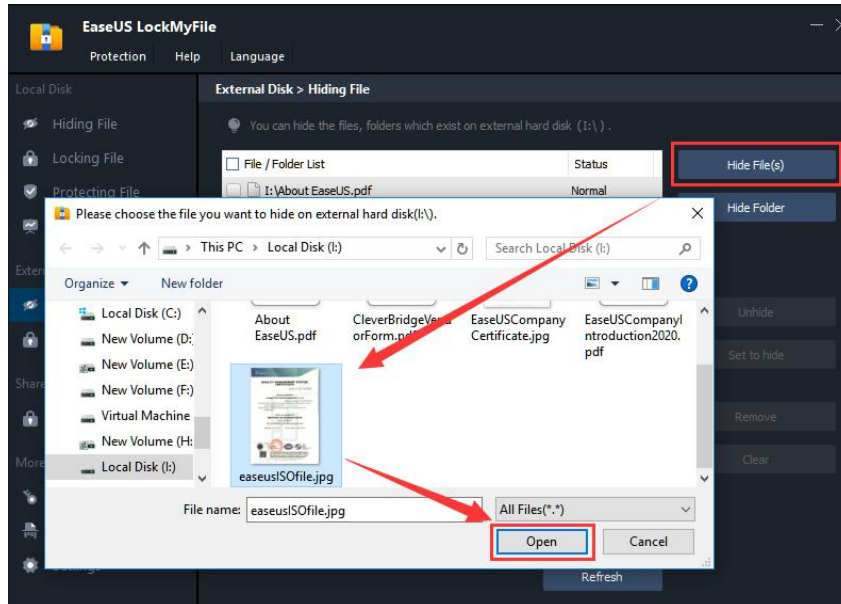
After adding the items, you will see the status (**Hidden/Normal**) on the hiding list. More options will be available on this same page.

- **Unhide:** Make the selected item(s) visible
- **Set to hide:** Make the selected item(s) invisible
- **Remove:** Delete the selected item(s) from the hide list and make them visible
- **Clear:** Delete all the item(s) from the hide list and make them visible



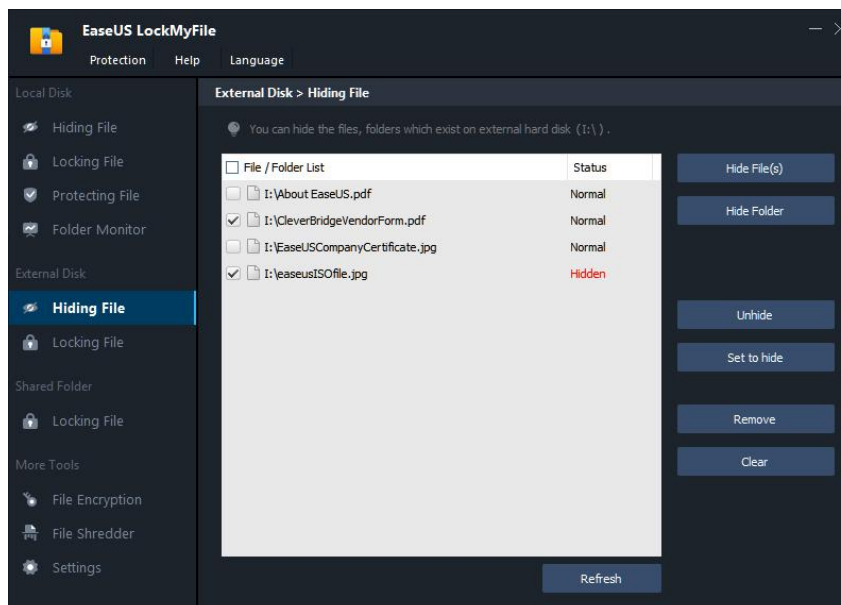
External Disk

Click on **Hide File(s)**, **Hide Folder** to select the file/folder you want to hide. Then they will be added to the hiding list. You can add files as many as you want. Please note hiding drive is not available for external disks.



When this external drive is connected to another computer, the hidden files on the list will remain invisible on that computer.

After adding the items, you will see their status (**Hidden/Normal**). Also, you will find other options in the right column.



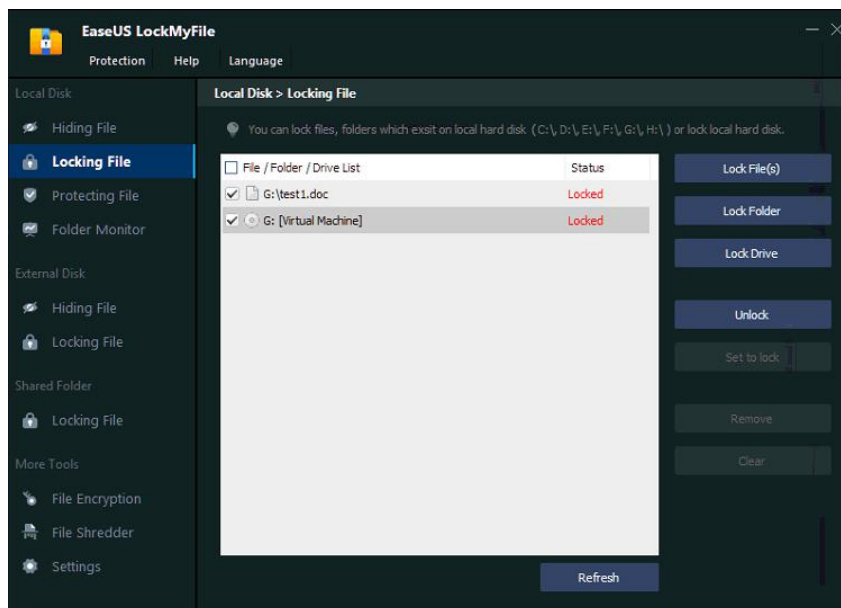
- **Unhide:** Make the selected item(s) visible
- **Set to hide:** Make the selected item(s) invisible
- **Remove:** Delete the selected item(s) from the hide list and make them visible
- **Clear:** Delete all the item(s) from the hide list and make them visible

Locking File

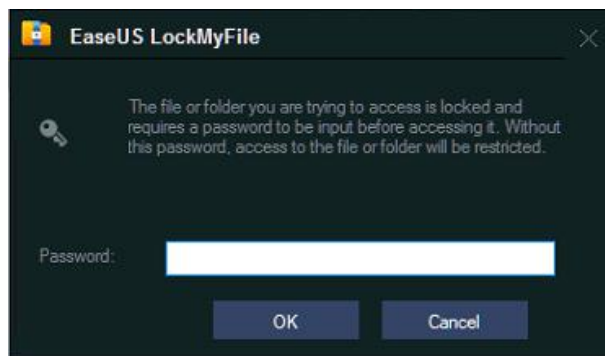
Use this feature to encrypt the files, folders, or drives that you want to set to private. The Locked files/folders or drives can't be opened, read, modified, renamed, moved, deleted, or copied without a password. This feature is available for **Local Disks**, **External Disks**, and **Shared Folders**.

Local Disks

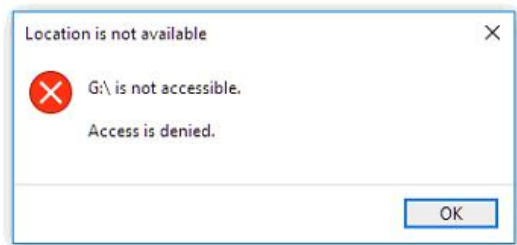
Click on the **Lock File(s)**, **Lock Folder**, **Lock Drive** button to select the one you want to lock. The added files, folders, or drives will be on the locking list.



To visit the locked Files/Folders, the following message will pop up and you are asked to input the **password** to access them.

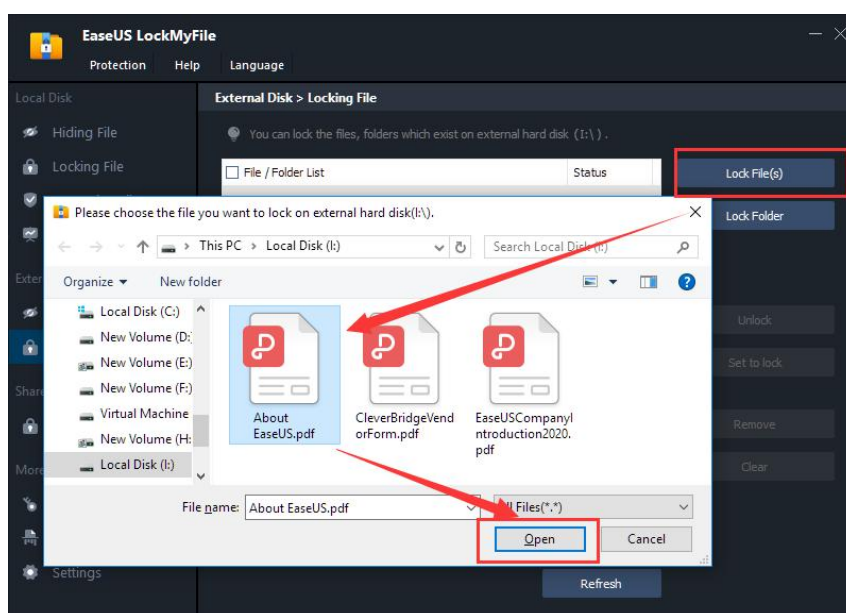


As for Drives, you can not access them normally in Windows Explorer without removing them from the **locking list** in the product.

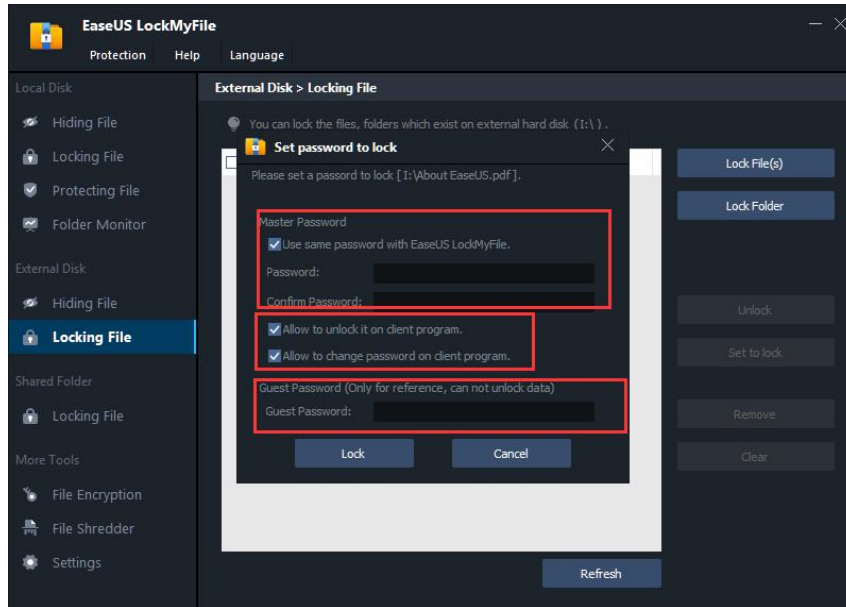


External Disks

Click on **Lock File(s)** or **Lock Folder** to select the file you want to lock. **Locking Drive** is not available on an external drive.



A window will pop up for you to select how you want to manage the locking files.



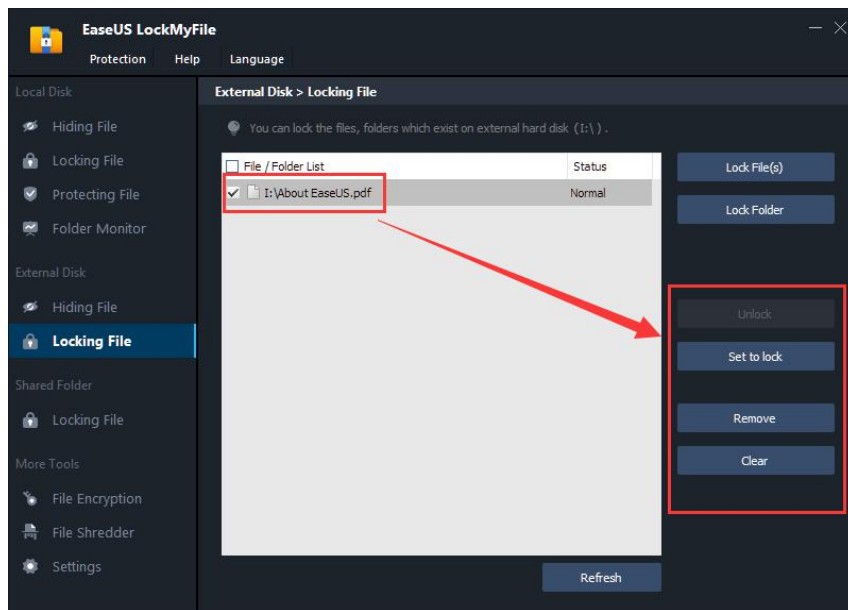
Master Password -Set to lock the file with the password you set in the product, or to set a separate password for this file.

Allow to unlock it on client program -By checking this option, you will be able to fill in the password and unlock the file in Windows Explorer.

Allow to change password on client program -by checking this option, you will be able to change the password for the locked file in Windows Explorer.

Guest Password -When attempting to access the locked file in Windows Explorer, users can use this password to view all its contents only. The file cannot be modified, renamed, or deleted.

By selecting a file in the list, you are able to **lock/unlock** it, **remove** or **clear** it from the list.

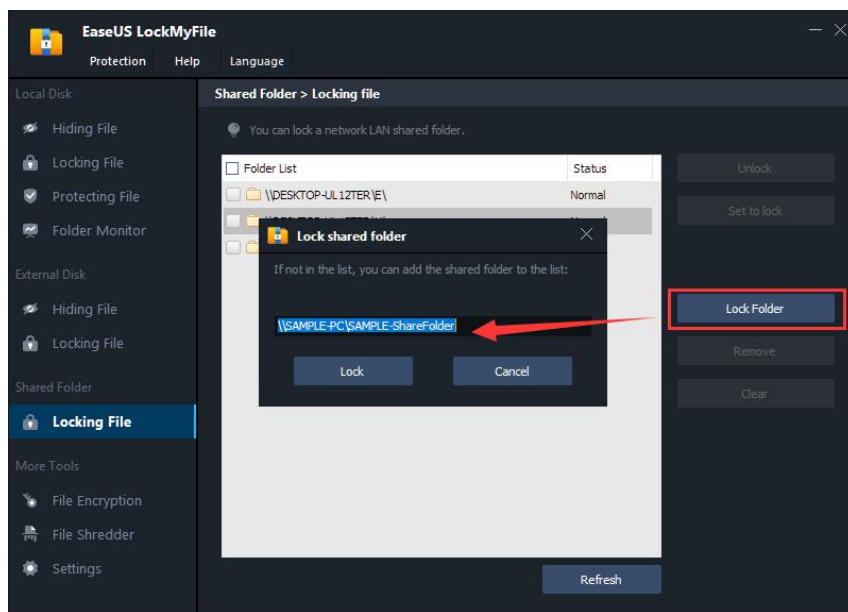


Shared Folder

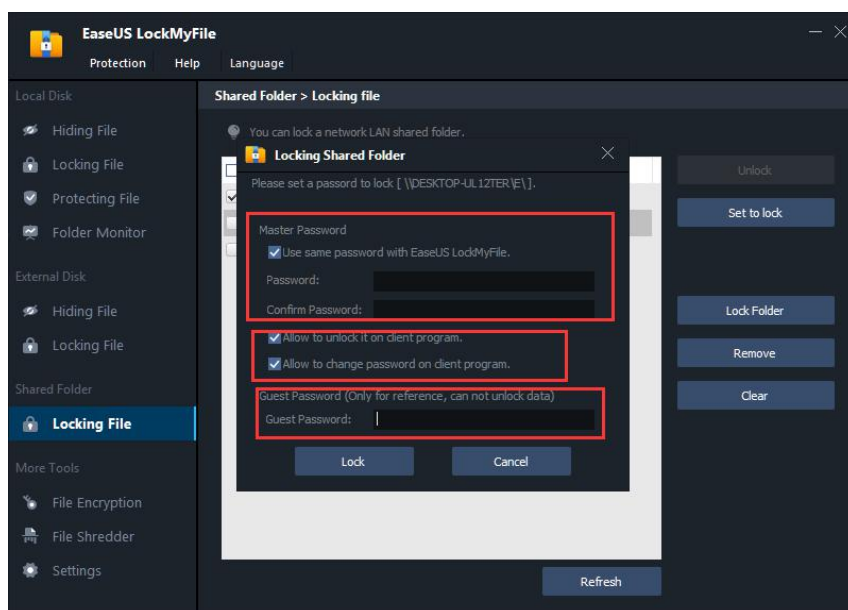
You are able to lock the shared folders in the product. All the other operations, including hiding, locking individual files or drives are not available in this section.

Navigate to the **Locking File** option under the **Shared Folder** section, the product will scan and list all the shared folders on this computer. You are able to select them from the list and choose to lock them, remove or clear them from the list.

By clicking **Lock Folder**, you can also manually fill in a path for the shared folder and lock it.



A window will pop up for you to select how you want to manage the locking files.



Master Password -Set to lock the file with the password you set in the product, or to set a separate password for this file.

Allow to unlock it on client program -By checking this option, you will be able to fill in the password and unlock the file in Windows Explorer.

Allow to change password on client program -by checking this option, you will be able to change the password for the locked file in Windows Explorer.

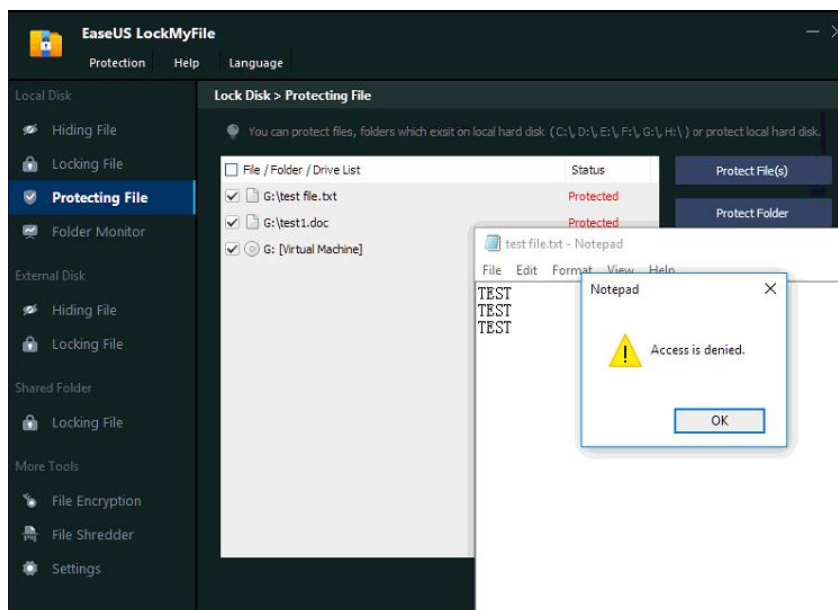
Guest Password -When attempting to access the locked file in Windows Explorer, users can use this password to view all its contents only. The file cannot be modified, renamed, or deleted.

By selecting a file in the list, you are able to **lock/unlock** it, **remove** or **clear** it from the list.

Protecting File

Use Protecting File feature to add write protection to the files, folders, or drives you select. Users can read the protected files, folders or drives, but can not modify, delete, or rename them without a password.

Click on **Protect File(s)**, **Protect Folder**, **Protect Drive** button to select the file/folder/drive you want to write protect and add them into the protecting list.

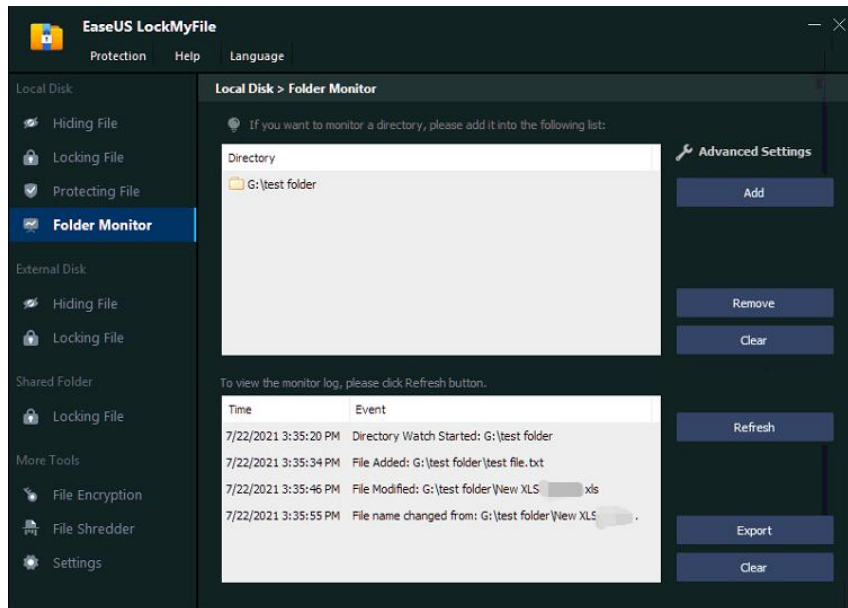


Folder Monitor

This feature allows users to monitor a disk or a folder and its sub-folders. All the operations or changes are made by the users to the selected disk/folder can be viewed on this page.

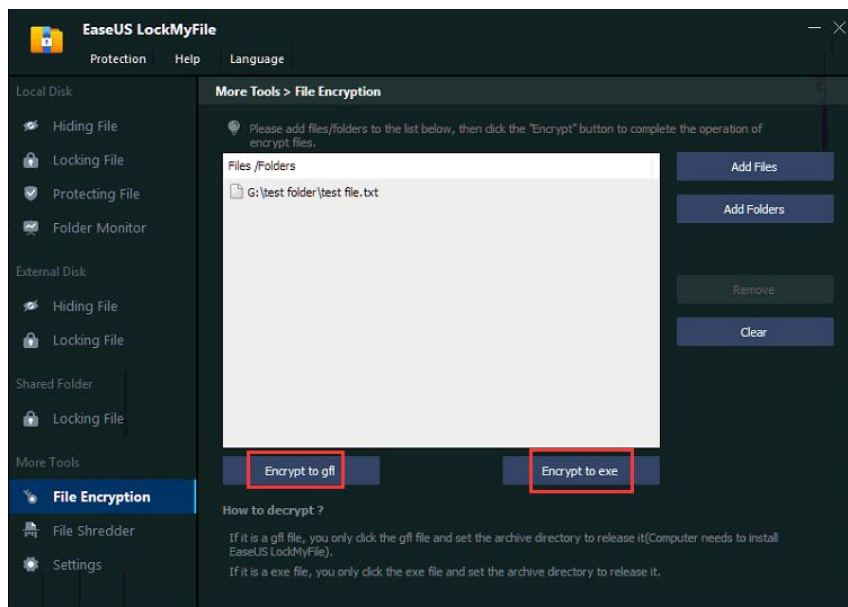
Click **Add** to add the folder you want to monitor. The monitor log can be

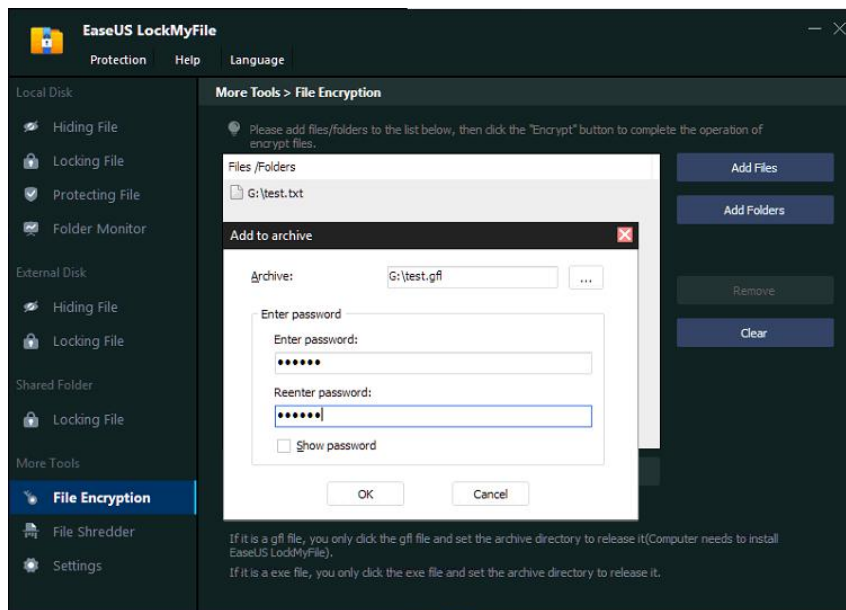
viewed, Refreshed, Exported, or Cleared on this page.



File Encryption

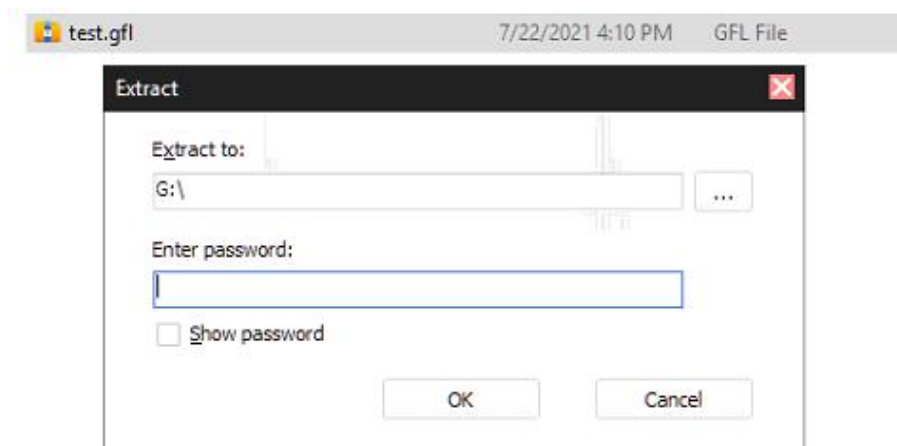
Please click **Add Files/Folders** to add the files/folders you want to encrypt. They can be encrypted into gfl or exe files. An independent password can be set up.





This feature will generate a new gfl/exe encrypted folder for the selected files/folders. The original files/folders will not be removed from your computer.

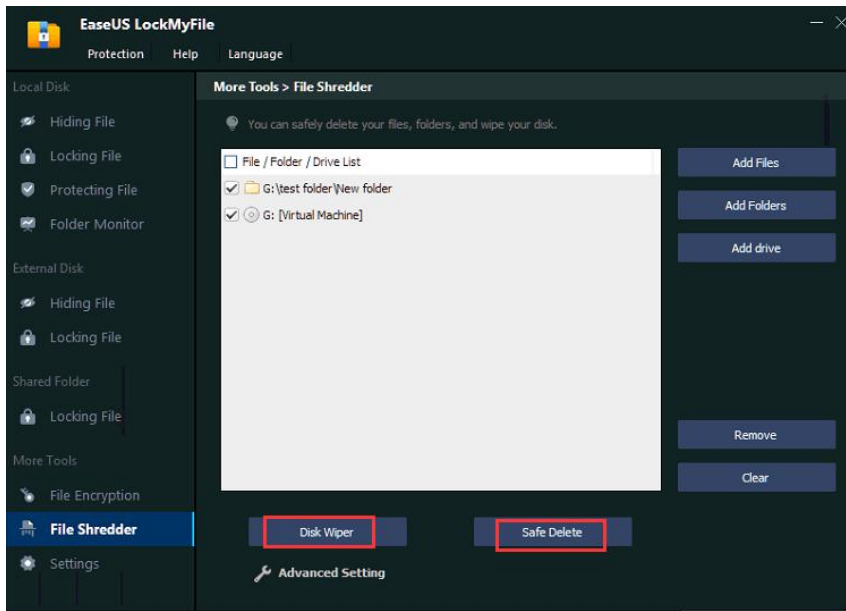
To decrypt the encrypted file, you need to locate it in Windows Explorer, set the archive directory to release as well as enter the password.



File Shredder

File Shredder allows users to safely delete their files, folders, or wipe the entire disk. The files deleted or wiped in this way will be completely erased and cannot be retrieved.

Click **Add** button in the right column to select the files, folders, or drives.

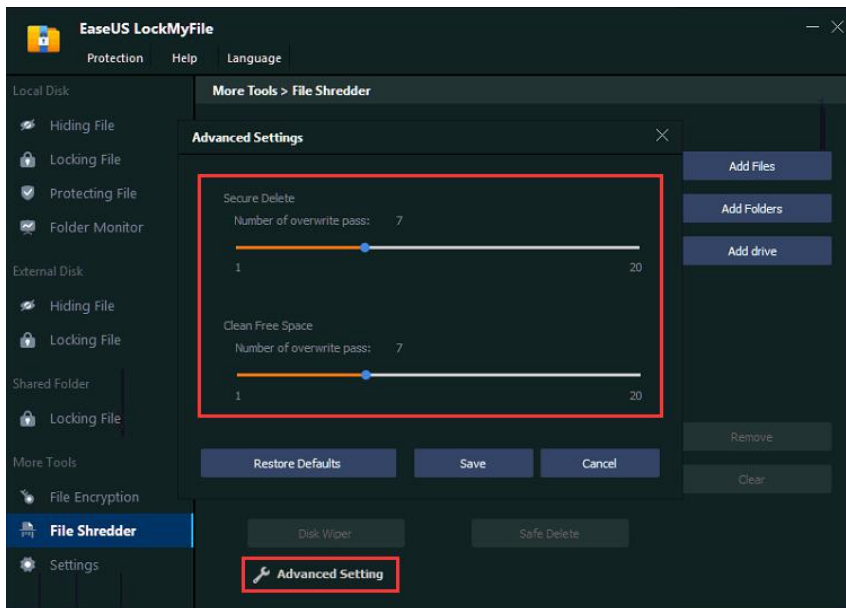


By selecting files and folders, the Safe Delete button will be highlighted. By selecting drives, both Disk Wiper and Safe Delete buttons will be available for you to select.

Disk Wiper- To clean and overwrite all the free sectors on the selected drive.

Safe Delete- To delete and overwrite all the selected files and folders, or all the existing files/folders on the selected drive.

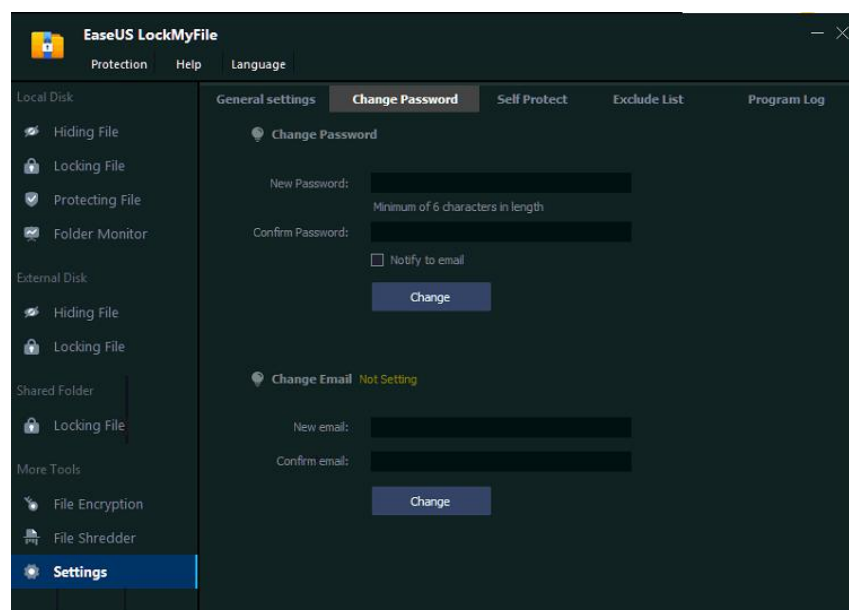
In **Advanced Setting**, you are able to set up the overwrite pass for Disk Wiper and Safe Delete. A higher number will require more time to process this operation.



Settings

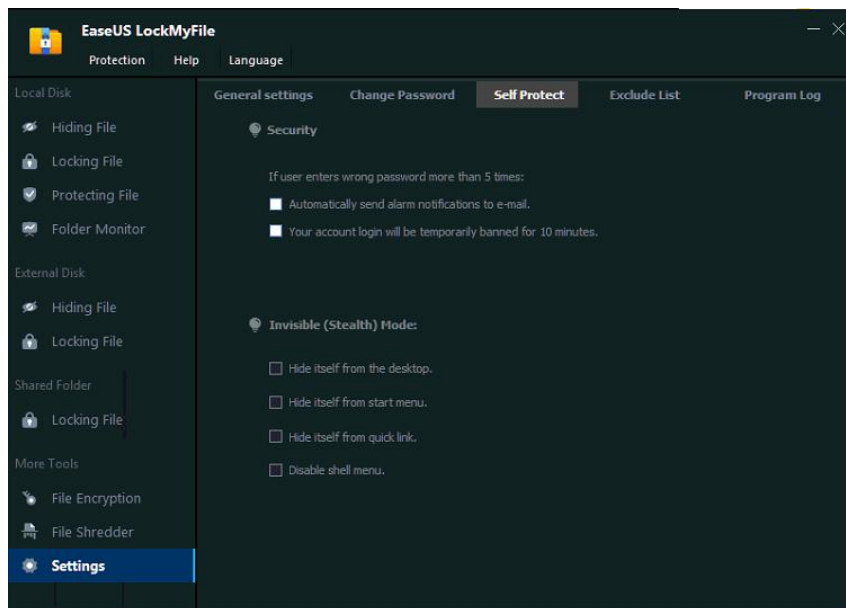
Change Password

The password and email address can be changed in Settings->-Change Password. Please kindly keep the updated password for your future reference.



Self Protection

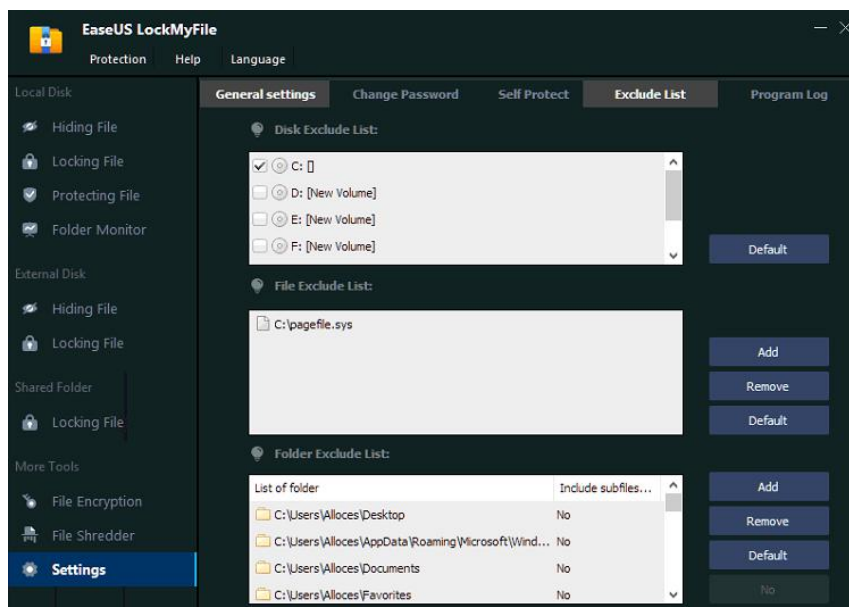
EaseUS LockMyFile provides powerful Self-protection in case someone will violate the protected folders on your computer. When someone enters the wrong password more than 5 times, you can ask the software to automatically send alarm notifications to your pre-defined e-mail and/or lock your account login temporarily for 10 mins.



You can hide this program in Invisible Mode, such as Hide itself from the desktop, the start menu, and quick link as well as Disable it from the shell menu.

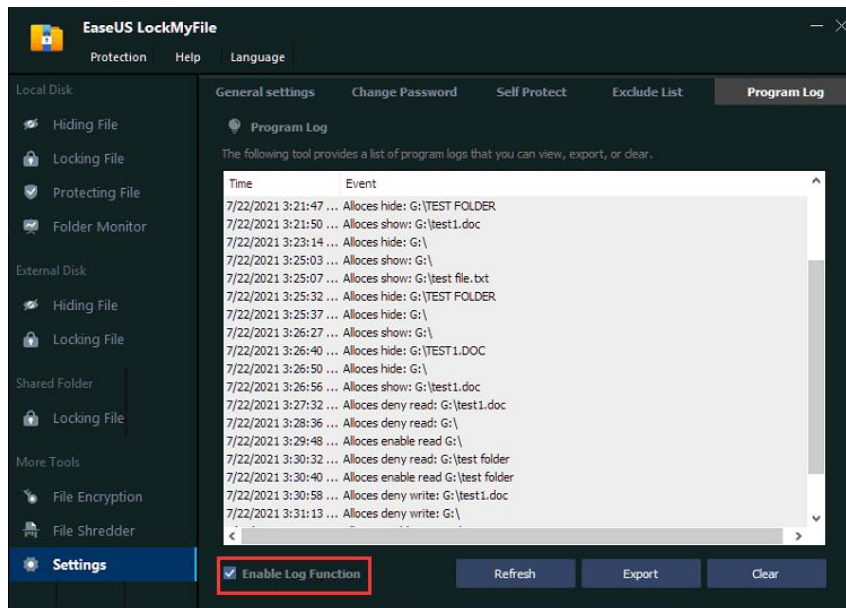
Exclude List

Add the drives/files/folders into the Exclusive List. If the drive or folder you want to operate includes the contents on this list, they will be bypassed by the product. For example, you are always recommended to add all the system-related folders to this list.



Program Log

In this log, you can **view**, **export**, or **clear** the usage log of this tool. The log function can be disabled, too.



Feedback and Support

If you encounter any issues when using **EaseUS LockMyFile**, or you have any feedback for this product, you can directly go to **Help**-> **Contact Support** on the interface and email us the details to sales@easeus.com.

